

# BiP/GRP78 Rabbit pAb

Catalog No.: A0241 **13 Publications**

## Basic Information

### Catalog No.

A0241

### Observed MW

78KDa

### Calculated MW

72kDa

### Category

Primary antibody

### Applications

WB, IHC, IF

### Cross-Reactivity

Human, Mouse, Rat

## Recommended Dilutions

<b>WB</b>	1:500 - 1:2000
<b>IHC</b>	1:50 - 1:200
<b>IF</b>	1:50 - 1:200

## Contact

 | [www.abclonal.com](http://www.abclonal.com)

## Background

The protein encoded by this gene is a member of the heat shock protein 70 (HSP70) family. It is localized in the lumen of the endoplasmic reticulum (ER), and is involved in the folding and assembly of proteins in the ER. As this protein interacts with many ER proteins, it may play a key role in monitoring protein transport through the cell.

## Immunogen Information

<b>Gene ID</b>	<b>Swiss Prot</b>
3309	P11021

### Immunogen

A synthetic peptide corresponding to a sequence within amino acids 550-650 of human BiP/GRP78 (NP\_005338.1).

### Synonyms

HSPA5;BIP;GRP78;HEL-S-89n;MIF2

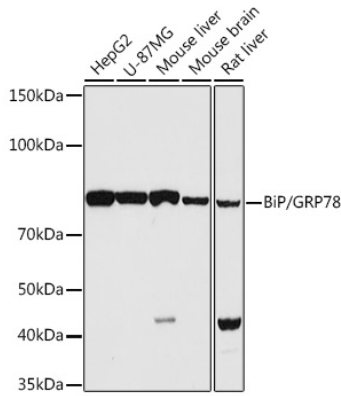
## Product Information

<b>Source</b>	<b>Isotype</b>	<b>Purification</b>
Rabbit	IgG	Affinity purification

### Storage

Store at -20°C. Avoid freeze / thaw cycles.  
Buffer: PBS with 0.02% sodium azide, 50% glycerol, pH7.3.

## Validation Data



Western blot analysis of extracts of various cell lines, using BiP/GRP78 antibody (A0241) at 1:1000 dilution.

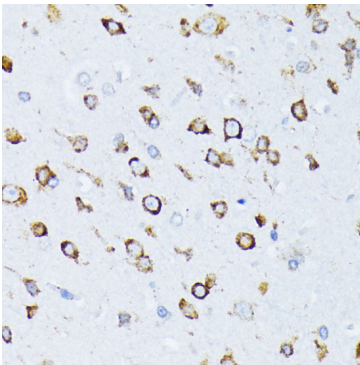
Secondary antibody: HRP Goat Anti-Rabbit IgG (H+L) (AS014) at 1:10000 dilution.

Lysates/proteins: 25ug per lane.

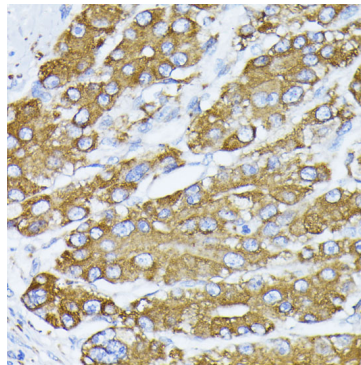
Blocking buffer: 3% nonfat dry milk in TBST.

Detection: ECL Basic Kit (RM00020).

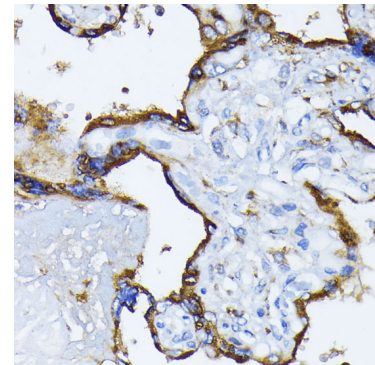
Exposure time: 10s.



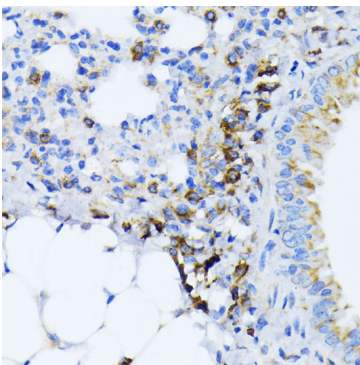
Immunohistochemistry of paraffin-embedded rat brain using BiP/GRP78 antibody (A0241) at dilution of 1:100 (40x lens).



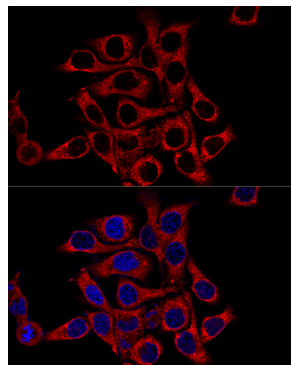
Immunohistochemistry of paraffin-embedded human liver cancer using BiP/GRP78 antibody (A0241) at dilution of 1:100 (40x lens).



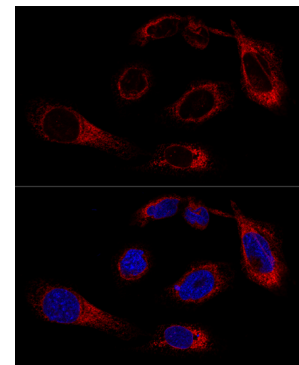
Immunohistochemistry of paraffin-embedded human placenta using BiP/GRP78 antibody (A0241) at dilution of 1:100 (40x lens).



Immunohistochemistry of paraffin-embedded mouse lung using BiP/GRP78 antibody (A0241) at dilution of 1:100 (40x lens).



Confocal immunofluorescence analysis of HeLa cells using BiP/GRP78 antibody (A0241) at dilution of 1:200. Blue: DAPI for nuclear staining.



Confocal immunofluorescence analysis of U-2OS cells using BiP/GRP78 antibody (A0241) at dilution of 1:200. Blue: DAPI for nuclear staining.