

[KO Validated] HDAC1 Rabbit pAb

Catalog No.: A0238 **KO** **Validated** **5 Publications**

Basic Information

Catalog No.

A0238

Observed MW

62kDa

Calculated MW

55kDa

Category

Primary antibody

Applications

WB, IHC, IF, IP, CHIP


Cross-Reactivity

Human, Mouse, Rat

Recommended Dilutions

WB	1:500 - 1:2000
IHC	1:100 - 1:200
IF	1:50 - 1:100
IP	1:50 - 1:100
ChIP	1:50 - 1:200

Contact

 | www.abclonal.com

Background

Histone acetylation and deacetylation, catalyzed by multisubunit complexes, play a key role in the regulation of eukaryotic gene expression. The protein encoded by this gene belongs to the histone deacetylase/acuc/apha family and is a component of the histone deacetylase complex. It also interacts with retinoblastoma tumor-suppressor protein and this complex is a key element in the control of cell proliferation and differentiation. Together with metastasis-associated protein-2, it deacetylates p53 and modulates its effect on cell growth and apoptosis.

Immunogen Information

Gene ID	Swiss Prot
3065	Q13547

Immunogen

Recombinant fusion protein containing a sequence corresponding to amino acids 393-482 of human HDAC1 (NP_004955.2).

Synonyms

GON-10;HD1;RPD3;RPD3L1;HDAC1

Product Information

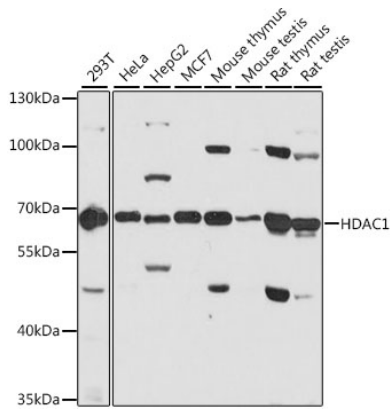
Source	Isotype	Purification
Rabbit	IgG	Affinity purification

Storage

Store at -20°C. Avoid freeze / thaw cycles.

Buffer: PBS with 0.02% sodium azide,50% glycerol,pH7.3.

Validation Data



Western blot analysis of extracts of various cell lines, using HDAC1 antibody (A0238) at 1:1000 dilution.

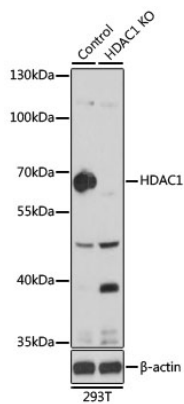
Secondary antibody: HRP Goat Anti-Rabbit IgG (H+L) (AS014) at 1:10000 dilution.

Lysates/proteins: 25ug per lane.

Blocking buffer: 3% nonfat dry milk in TBST.

Detection: ECL Basic Kit (RM00020).

Exposure time: 60s.



Western blot analysis of extracts from normal (control) and HDAC1 knockout (KO) 293T cells, using HDAC1 antibody (A0238) at 1:1000 dilution.

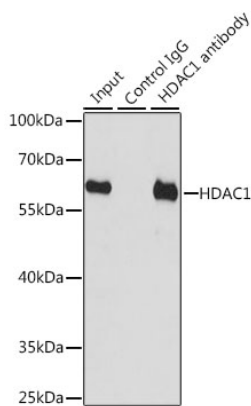
Secondary antibody: HRP Goat Anti-Rabbit IgG (H+L) (AS014) at 1:10000 dilution.

Lysates/proteins: 25ug per lane.

Blocking buffer: 3% nonfat dry milk in TBST.

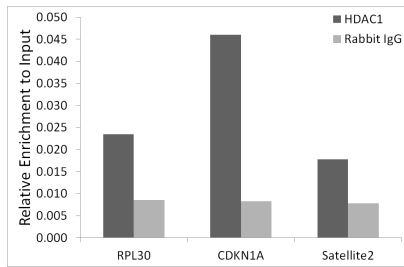
Detection: ECL Basic Kit (RM00020).

Exposure time: 60s.

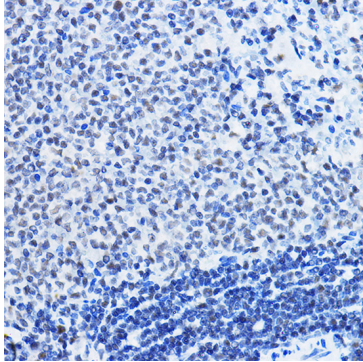


Immunoprecipitation analysis of 200ug extracts of HT-29 cells, using 3 ug HDAC1 antibody (A0238). Western blot was performed from the immunoprecipitate using HDAC1 antibody (A0238) at a dilution of 1:1000.

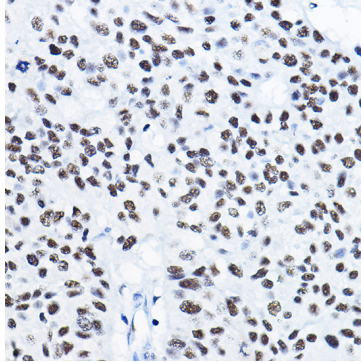
Validation Data



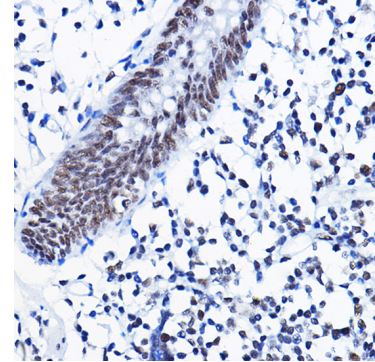
Chromatin immunoprecipitation analysis of extracts of K-562 cells, using HDAC1 antibody (A0238) and rabbit IgG. The amount of immunoprecipitated DNA was checked by quantitative PCR. Histogram was constructed by the ratios of the immunoprecipitated DNA to the input.



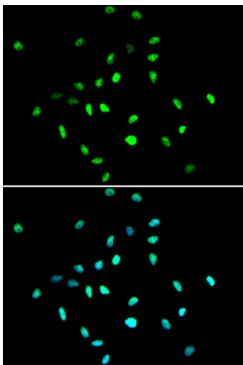
Immunohistochemistry of paraffin-embedded rat spleen using [KO Validated] HDAC1 Rabbit pAb (A0238) at dilution of 1:50 (40x lens).



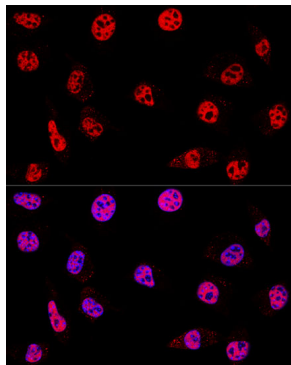
Immunohistochemistry of paraffin-embedded human lung cancer using [KO Validated] HDAC1 Rabbit pAb (A0238) at dilution of 1:50 (40x lens).



Immunohistochemistry of paraffin-embedded human colon using [KO Validated] HDAC1 Rabbit pAb (A0238) at dilution of 1:50 (40x lens).



Immunofluorescence analysis of A549 cells using HDAC1 antibody (A0238). Blue: DAPI for nuclear staining.



Confocal immunofluorescence analysis of L929 cells using HDAC1 Polyclonal Antibody (A0238) at dilution of 1:200. Blue: DAPI for nuclear staining.