

GFAP Rabbit pAb

Catalog No.: A0237 **8 Publications**

Basic Information

Catalog No.

A0237

Observed MW

50KDa

Calculated MW

49kDa/50kDa

Category

Primary antibody

Applications

WB, IHC, IF

Cross-Reactivity

Human, Mouse, Rat

Recommended Dilutions

WB	1:500 - 1:2000
IHC	1:50 - 1:200
IF	1:50 - 1:200

Contact

 | www.abclonal.com

Background

This gene encodes one of the major intermediate filament proteins of mature astrocytes. It is used as a marker to distinguish astrocytes from other glial cells during development. Mutations in this gene cause Alexander disease, a rare disorder of astrocytes in the central nervous system. Alternative splicing results in multiple transcript variants encoding distinct isoforms.

Immunogen Information

Gene ID	Swiss Prot
2670	P14136

Immunogen

A synthetic peptide corresponding to a sequence within amino acids 300 to the C-terminus of human GFAP (NP_002046.1).

Synonyms

ALXDRD;GFAP

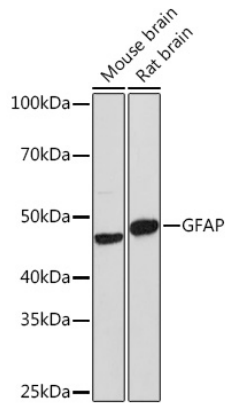
Product Information

Source	Isotype	Purification
Rabbit	IgG	Affinity purification

Storage

Store at -20°C. Avoid freeze / thaw cycles.
Buffer: PBS with 0.02% sodium azide, 50% glycerol, pH 7.3.

Validation Data



Western blot analysis of extracts of various cell lines, using GFAP Rabbit pAb (A0237) at 1:1000 dilution.

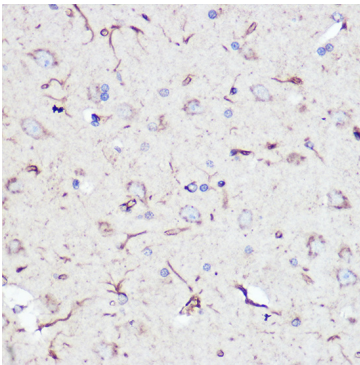
Secondary antibody: HRP Goat Anti-Rabbit IgG (H+L) (AS014) at 1:10000 dilution.

Lysates/proteins: 25ug per lane.

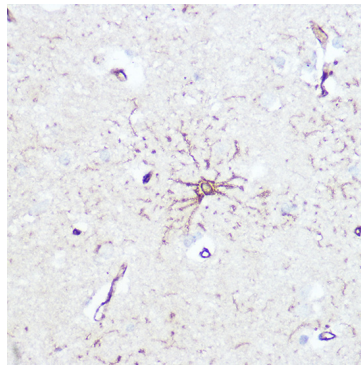
Blocking buffer: 3% nonfat dry milk in TBST.

Detection: ECL Enhanced Kit (RM00021).

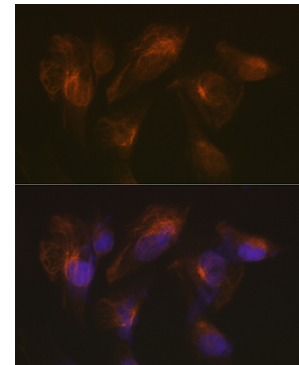
Exposure time: 180s.



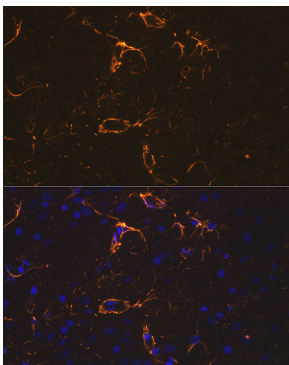
Immunohistochemistry of paraffin-embedded rat brain using GFAP Rabbit pAb (A0237) at dilution of 1:100 (40x lens).



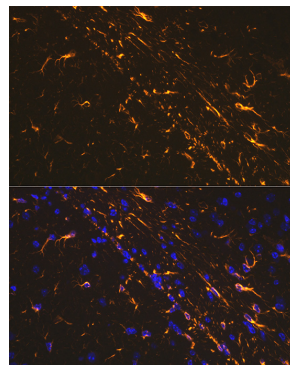
Immunohistochemistry of paraffin-embedded human brain using GFAP Rabbit pAb (A0237) at dilution of 1:100 (40x lens).



Immunofluorescence analysis of U-251 MG cells using GFAP Rabbit pAb (A0237) at dilution of 1:100 (40x lens). Blue: DAPI for nuclear staining.



Immunofluorescence analysis of rat brain using GFAP Rabbit pAb (A0237) at dilution of 1:100 (40x lens). Blue: DAPI for nuclear staining.



Immunofluorescence analysis of mouse brain using GFAP Rabbit pAb (A0237) at dilution of 1:100 (40x lens). Blue: DAPI for nuclear staining.