

c-Fos Rabbit pAb

Catalog No.: A0236 **7 Publications**

Basic Information

Catalog No.

A0236

Observed MW

55-60kDa

Calculated MW

28kDa/36kDa/40kDa

Category

Primary antibody

Applications

WB, IHC, IP

Cross-Reactivity

Human, Mouse, Rat

Recommended Dilutions

WB	1:500 - 1:2000
IHC	1:50 - 1:200
IP	1:50 - 1:200

Contact

 | www.abclonal.com

Background

The Fos gene family consists of 4 members: FOS, FOSB, FOSL1, and FOSL2. These genes encode leucine zipper proteins that can dimerize with proteins of the JUN family, thereby forming the transcription factor complex AP-1. As such, the FOS proteins have been implicated as regulators of cell proliferation, differentiation, and transformation. In some cases, expression of the FOS gene has also been associated with apoptotic cell death.

Immunogen Information

Gene ID	Swiss Prot
2353	P01100

Immunogen

Recombinant fusion protein containing a sequence corresponding to amino acids 211-380 of human c-Fos (NP_005243.1).

Synonyms

FOS;AP-1;C-FOS;p55;c-Fos

Product Information

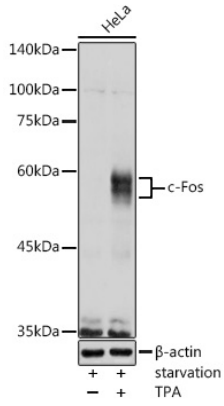
Source	Isotype	Purification
Rabbit	IgG	Affinity purification

Storage

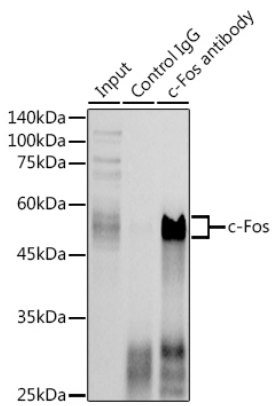
Store at -20°C. Avoid freeze / thaw cycles.

Buffer: PBS with 0.02% sodium azide,50% glycerol,pH7.3.

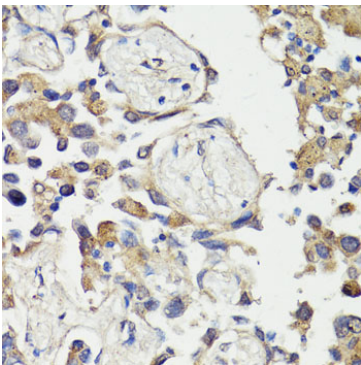
Validation Data



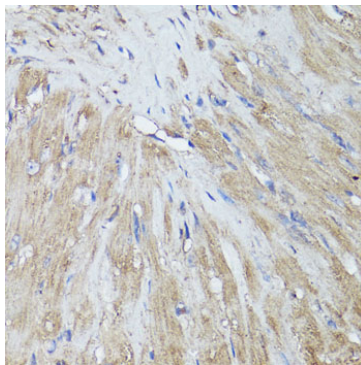
Western blot analysis of extracts of HeLa cells, using c-Fos antibody (A0236) at 1:1000 dilution. HeLa cells were treated by PMA/TPA (200 nM) at 37°C for 15 minutes after serum-starvation overnight. Secondary antibody: HRP Goat Anti-Rabbit IgG (H+L) (AS014) at 1:10000 dilution. Lysates/proteins: 25ug per lane. Blocking buffer: 3% nonfat dry milk in TBST. Detection: ECL Basic Kit (RM00020). Exposure time: 1s.



Immunoprecipitation analysis of 300ug extracts of HeLa cells using 3ug c-Fos antibody (A0236). Western blot was performed from the immunoprecipitate using c-Fos antibody (A0236) at a dilution of 1:1000.



Immunohistochemistry of paraffin-embedded human lung cancer using C-FOS antibody (A0236) at dilution of 1:150 (40x lens).



Immunohistochemistry of paraffin-embedded mouse heart using C-FOS antibody (A0236) at dilution of 1:150 (40x lens).