

SIRT1 Rabbit pAb

Catalog No.: A0230 **7 Publications**

Basic Information

Catalog No.

A0230

Observed MW

120kDa

Calculated MW

61kDa/81kDa

Category

Primary antibody

Applications

WB, IF

Cross-Reactivity

Mouse, Rat

Recommended Dilutions

WB	1:500 - 1:2000
IF	1:50 - 1:200

Contact

 | www.abclonal.com

Background

This gene encodes a member of the sirtuin family of proteins, homologs to the yeast Sir2 protein. Members of the sirtuin family are characterized by a sirtuin core domain and grouped into four classes. The functions of human sirtuins have not yet been determined; however, yeast sirtuin proteins are known to regulate epigenetic gene silencing and suppress recombination of rDNA. Studies suggest that the human sirtuins may function as intracellular regulatory proteins with mono-ADP-ribosyltransferase activity. The protein encoded by this gene is included in class I of the sirtuin family. Alternative splicing results in multiple transcript variants.

Immunogen Information

Gene ID

23411

Swiss Prot

Q96EB6

Immunogen

A synthetic peptide of human SIRT1

Synonyms

SIR2;SIR2L1;SIR2alpha;SIRT1;sirtuin 1

Product Information

Source

Rabbit

Isotype

IgG

Purification

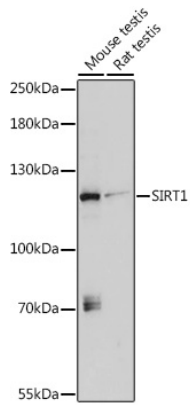
Affinity purification

Storage

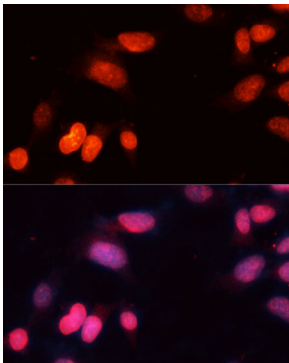
Store at -20°C. Avoid freeze / thaw cycles.

Buffer: PBS with 0.02% sodium azide,50% glycerol,pH7.3.

Validation Data



Western blot analysis of extracts of various cell lines, using SIRT1 antibody (A0230) at 1:1000 dilution.
Secondary antibody: HRP Goat Anti-Rabbit IgG (H+L) (AS014) at 1:10000 dilution.
Lysates/proteins: 25ug per lane.
Blocking buffer: 3% nonfat dry milk in TBST.
Detection: ECL Basic Kit (RM00020).
Exposure time: 30s.



Immunofluorescence analysis of NIH-3T3 cells using SIRT1 Polyclonal Antibody (A0230) at dilution of 1:100 (40x lens).
Blue: DAPI for nuclear staining.