

p38 MAPK Rabbit pAb

Catalog No.: A0227 **10 Publications**

Basic Information

Catalog No.

A0227

Observed MW

38kDa

Calculated MW

29kDa/34kDa/35kDa/41kDa

Category

Primary antibody

Applications

WB, IHC

Cross-Reactivity

Human, Mouse, Rat

Recommended Dilutions

WB	1:500 - 1:2000
IHC	1:50 - 1:200

Contact

 | www.abclonal.com

Background

The protein encoded by this gene is a member of the MAP kinase family. MAP kinases act as an integration point for multiple biochemical signals, and are involved in a wide variety of cellular processes such as proliferation, differentiation, transcription regulation and development. This kinase is activated by various environmental stresses and proinflammatory cytokines. The activation requires its phosphorylation by MAP kinase kinases (MKKs), or its autophosphorylation triggered by the interaction of MAP3K7IP1/TAB1 protein with this kinase. The substrates of this kinase include transcription regulator ATF2, MEF2C, and MAX, cell cycle regulator CDC25B, and tumor suppressor p53, which suggest the roles of this kinase in stress related transcription and cell cycle regulation, as well as in genotoxic stress response. Four alternatively spliced transcript variants of this gene encoding distinct isoforms have been reported.

Immunogen Information

Gene ID	Swiss Prot
1432	Q16539

Immunogen

Recombinant fusion protein containing a sequence corresponding to amino acids 1-360 of human p38 MAPK (NP_620581.1).

Synonyms

MAPK14;CSBP;CSBP1;CSBP2;CSPB1;EXIP;Mxi2;PRKM14;PRKM15;RK;SAPK2A;p38;p38ALP HA;p38 MAPK

Product Information

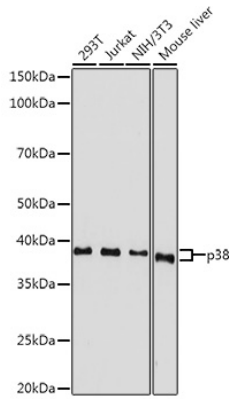
Source	Isotype	Purification
Rabbit	IgG	Affinity purification

Storage

Store at -20°C. Avoid freeze / thaw cycles.

Buffer: PBS with 0.02% sodium azide,50% glycerol,pH7.3.

Validation Data



Western blot analysis of extracts of various cell lines, using p38 MAPK antibody (A0227) at 1:500 dilution.

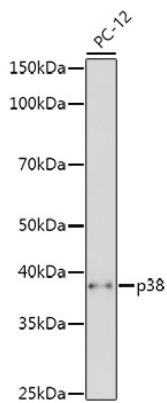
Secondary antibody: HRP Goat Anti-Rabbit IgG (H+L) (AS014) at 1:10000 dilution.

Lysates/proteins: 25ug per lane.

Blocking buffer: 3% nonfat dry milk in TBST.

Detection: ECL Basic Kit (RM00020).

Exposure time: 90s.



Western blot analysis of extracts of PC-12 cells, using p38 MAPK antibody (A0227) at 1:500 dilution.

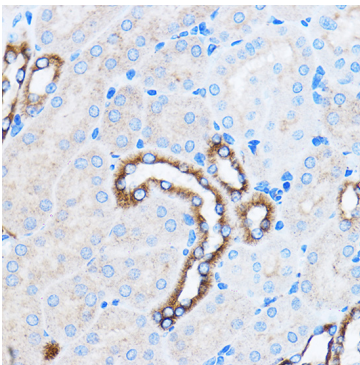
Secondary antibody: HRP Goat Anti-Rabbit IgG (H+L) (AS014) at 1:10000 dilution.

Lysates/proteins: 25ug per lane.

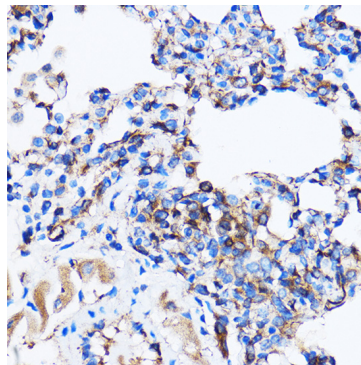
Blocking buffer: 3% nonfat dry milk in TBST.

Detection: ECL Basic Kit (RM00020).

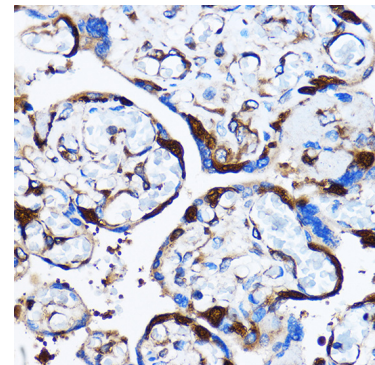
Exposure time: 180s.



Immunohistochemistry of paraffin-embedded Mouse kidney using p38 MAPK Rabbit pAb (A0227) at dilution of 1:100 (40x lens).



Immunohistochemistry of paraffin-embedded Rat lung using p38 MAPK Rabbit pAb (A0227) at dilution of 1:100 (40x lens).



Immunohistochemistry of paraffin-embedded Human placenta using p38 MAPK Rabbit pAb (A0227) at dilution of 1:100 (40x lens).