

Cytochrome C Rabbit pAb

Catalog No.: A0225 **7 Publications**

Basic Information

Catalog No.

A0225

Observed MW

14KDa

Calculated MW

11kDa

Category

Primary antibody

Applications

WB, IHC, IF

Cross-Reactivity

Human, Mouse, Rat

Recommended Dilutions

WB	1:500 - 1:2000
IHC	1:50 - 1:200
IF	1:50 - 1:200

Contact

 | www.abclonal.com

Background

This gene encodes a small heme protein that functions as a central component of the electron transport chain in mitochondria. The encoded protein associates with the inner membrane of the mitochondrion where it accepts electrons from cytochrome b and transfers them to the cytochrome oxidase complex. This protein is also involved in initiation of apoptosis. Mutations in this gene are associated with autosomal dominant nonsyndromic thrombocytopenia. Numerous processed pseudogenes of this gene are found throughout the human genome.

Immunogen Information

Gene ID

54205

Swiss Prot

P99999

Immunogen

Recombinant fusion protein containing a sequence corresponding to amino acids 1-105 of human Cytochrome C (NP_061820.1).

Synonyms

CYCS;CYC;HCS;THC4;cytochrome c

Product Information

Source

Rabbit

Isotype

IgG

Purification

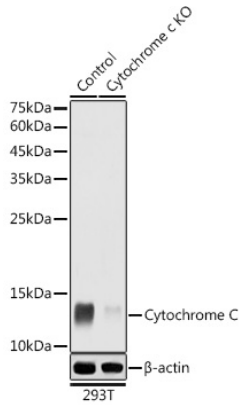
Affinity purification

Storage

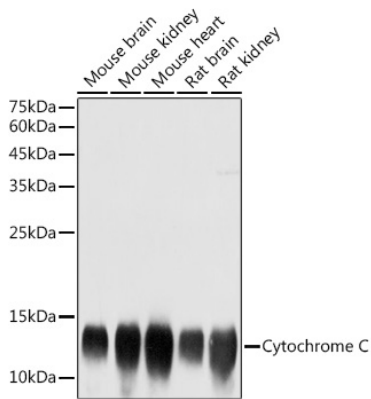
Store at -20°C. Avoid freeze / thaw cycles.

Buffer: PBS with 0.02% sodium azide,50% glycerol,pH7.3.

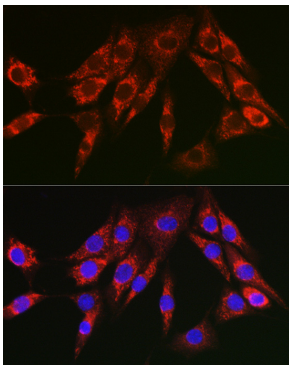
Validation Data



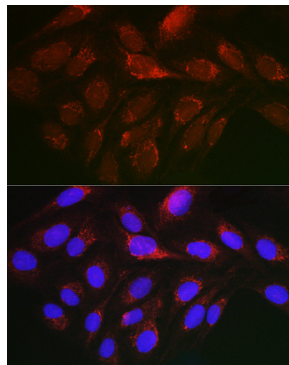
Western blot analysis of extracts from normal (control) and Cytochrome C knockout (KO) 293T cells, using Cytochrome C antibody (A0225) at 1:1000 dilution.
Secondary antibody: HRP Goat Anti-Rabbit IgG (H+L) (AS014) at 1:10000 dilution.
Lysates/proteins: 25ug per lane.
Blocking buffer: 3% nonfat dry milk in TBST.
Detection: ECL Basic Kit (RM00020).
Exposure time: 1s.



Western blot analysis of extracts of various cell lines, using Cytochrome C antibody (A0225) at 1:1000 dilution.
Secondary antibody: HRP Goat Anti-Rabbit IgG (H+L) (AS014) at 1:10000 dilution.
Lysates/proteins: 25ug per lane.
Blocking buffer: 3% nonfat dry milk in TBST.
Detection: ECL Basic Kit (RM00020).
Exposure time: 1s.



Immunofluorescence analysis of NIH/3T3 cells using Cytochrome C Rabbit pAb (A0225) at dilution of 1:150 (40x lens).
Blue: DAPI for nuclear staining.



Immunofluorescence analysis of U2OS cells using Cytochrome C Rabbit pAb (A0225) at dilution of 1:150 (40x lens).
Blue: DAPI for nuclear staining.