

Bcl-2 Rabbit pAb

Catalog No.: A0208 **150 Publications**

Basic Information

Catalog No.

A0208

Observed MW

26kDa

Calculated MW

22kDa/26kDa

Category

Primary antibody

Applications

WB, IHC, IF, IP

Cross-Reactivity

Human, Mouse, Rat

Background

This gene encodes an integral outer mitochondrial membrane protein that blocks the apoptotic death of some cells such as lymphocytes. Constitutive expression of BCL2, such as in the case of translocation of BCL2 to Ig heavy chain locus, is thought to be the cause of follicular lymphoma. Alternative splicing results in multiple transcript variants.

Recommended Dilutions

WB	1:500 - 1:2000
IHC	1:50 - 1:100
IF	1:50 - 1:100
IP	1:50 - 1:200

Immunogen Information

Gene ID

596

Swiss Prot

P10415

Immunogen

A synthetic peptide of human Bcl-2

Synonyms

Bcl-2;PPP1R50;BCL2

Contact

 | www.abclonal.com

Product Information

Source

Rabbit

Isotype

IgG

Purification

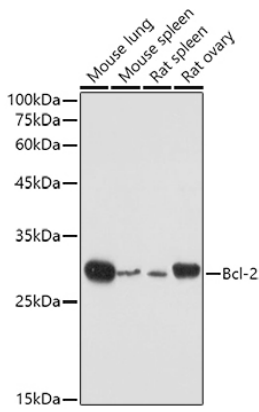
Affinity purification

Storage

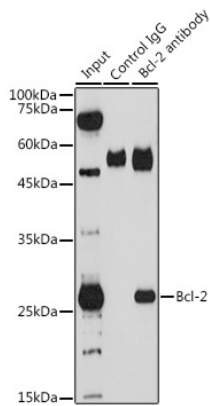
Store at -20°C. Avoid freeze / thaw cycles.

Buffer: PBS with 0.02% sodium azide, 50% glycerol, pH7.3.

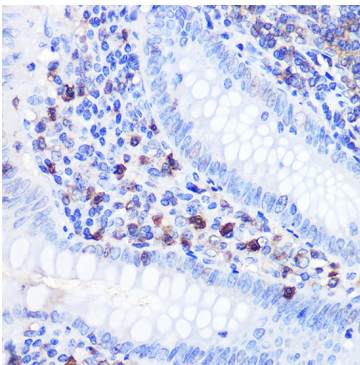
Validation Data



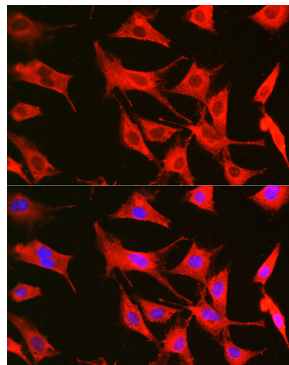
Western blot analysis of extracts of various cell lines, using Bcl-2 antibody (A0208) at 1:500 dilution. Secondary antibody: HRP Goat Anti-Rabbit IgG (H+L) (A5014) at 1:10000 dilution. Lysates/proteins: 25ug per lane. Blocking buffer: 3% nonfat dry milk in TBST. Detection: ECL Basic Kit (RM00020). Exposure time: 30s.



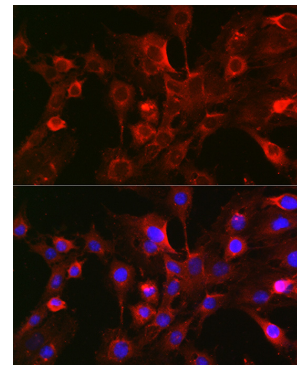
Immunoprecipitation analysis of 200ug extracts of THP-1 cells using 3ug Bcl-2 antibody (A0208). Western blot was performed from the immunoprecipitate using Bcl-2 antibody (A0208) at a dilution of 1:1000.



Immunohistochemistry of paraffin-embedded human appendix using Bcl-2 Rabbit pAb (A0208) at dilution of 1:100 (40x lens). Perform microwave antigen retrieval with 10 mM PBS buffer pH 7.2 before commencing with IHC staining protocol.

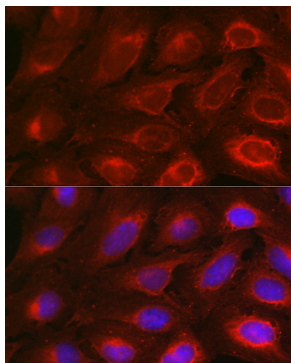


Immunofluorescence analysis of BALB-3T3 cells using Bcl-2 Rabbit pAb (A0208) at dilution of 1:100 (40x lens). Blue: DAPI for nuclear staining.



Immunofluorescence analysis of C6 cells using Bcl-2 Rabbit pAb (A0208) at dilution of 1:100 (40x lens). Blue: DAPI for nuclear staining.

Validation Data



Immunofluorescence analysis of U-2 OS cells using Bcl-2 Rabbit pAb (A0208) at dilution of 1:100 (40x lens). Blue: DAPI for nuclear staining.