

CaMKII Rabbit mAb

Catalog No.: A0198 **Recombinant**

Basic Information

Catalog No.

A0198

Observed MW

50kDa/55kDa/60kDa

Calculated MW

54kDa

Category

Primary antibody

Applications

WB,IHC

Cross-Reactivity

Human, Mouse, Rat

Recommended Dilutions

WB	1:500 - 1:2000
IHC	1:50 - 1:200

Contact

 | www.abclonal.com

Background

The product of this gene belongs to the serine/threonine protein kinase family and to the Ca(2+)/calmodulin-dependent protein kinase subfamily. Calcium signaling is crucial for several aspects of plasticity at glutamatergic synapses. In mammalian cells, the enzyme is composed of four different chains: alpha, beta, gamma, and delta. The product of this gene is a beta chain. It is possible that distinct isoforms of this chain have different cellular localizations and interact differently with calmodulin. Alternative splicing results in multiple transcript variants. [provided by RefSeq, May 2014]

Immunogen Information

Gene ID	Swiss Prot
816	Q13554

Immunogen

A synthesized peptide derived from human CaMKII

Synonyms

CAM2; CAMK2; CAMKB

Product Information

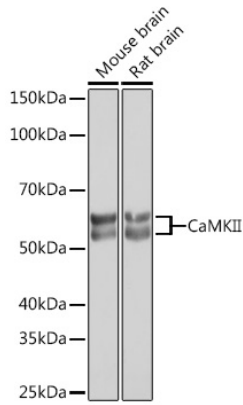
Source	Isotype	Purification
Rabbit	IgG	Affinity purification

Storage

Store at -20°C. Avoid freeze / thaw cycles.

Buffer: PBS with 0.02% sodium azide,0.05% BSA,50% glycerol,pH7.3.

Validation Data



Western blot analysis of extracts of various cell lines, using CaMKII Rabbit mAb (A0198) at 1:1000 dilution.

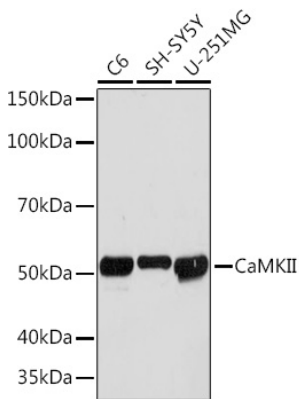
Secondary antibody: HRP Goat Anti-Rabbit IgG (H+L) (AS014) at 1:10000 dilution.

Lysates/proteins: 25ug per lane.

Blocking buffer: 3% nonfat dry milk in TBST.

Detection: ECL Basic Kit (RM00020).

Exposure time: 5s.



Western blot analysis of extracts of various cell lines, using CaMKII Rabbit mAb (A0198) at 1:1000 dilution.

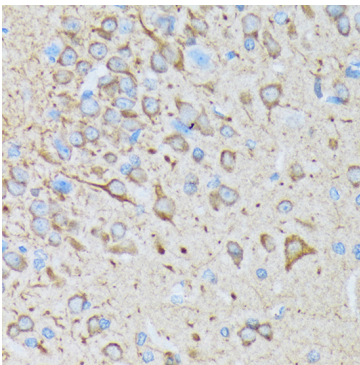
Secondary antibody: HRP Goat Anti-Rabbit IgG (H+L) (AS014) at 1:10000 dilution.

Lysates/proteins: 25ug per lane.

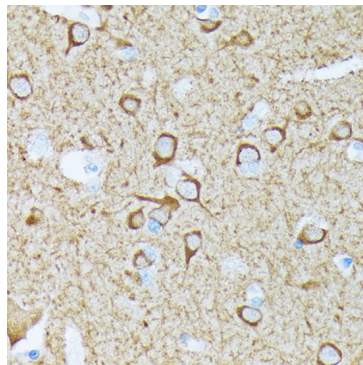
Blocking buffer: 3% nonfat dry milk in TBST.

Detection: ECL Basic Kit (RM00020).

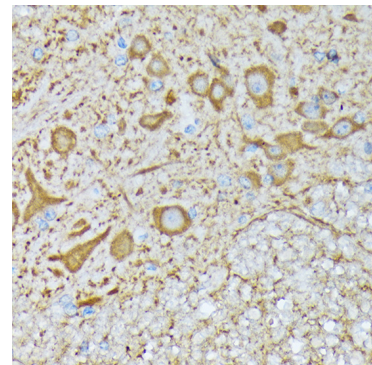
Exposure time: 90s.



Immunohistochemistry of paraffin-embedded rat brain using CaMKII Rabbit mAb (A0198) at dilution of 1:100 (40x lens).



Immunohistochemistry of paraffin-embedded human brain using CaMKII Rabbit mAb (A0198) at dilution of 1:100 (40x lens).



Immunohistochemistry of paraffin-embedded mouse spinal cord using CaMKII Rabbit mAb (A0198) at dilution of 1:100 (40x lens).