

# CDK5R1 Rabbit pAb

Catalog No.: A0197

## Basic Information

**Observed MW**

33kDa

**Calculated MW**

34kDa

**Category**

Primary antibody

**Applications**

WB

**Cross-Reactivity**

Human

## Background

The protein encoded by this gene (p35) is a neuron-specific activator of cyclin-dependent kinase 5 (CDK5); the activation of CDK5 is required for proper development of the central nervous system. The p35 form of this protein is proteolytically cleaved by calpain, generating a p25 form. The cleavage of p35 into p25 results in relocalization of the protein from the cell periphery to nuclear and perinuclear regions. P25 deregulates CDK5 activity by prolonging its activation and changing its cellular location. The p25 form accumulates in the brain neurons of patients with Alzheimer's disease. This accumulation correlates with an increase in CDK5 kinase activity, and may lead to aberrantly phosphorylated forms of the microtubule-associated protein tau, which contributes to Alzheimer's disease.

## Recommended Dilutions

WB 1:200 - 1:500

## Immunogen Information

**Gene ID**

8851

**Swiss Prot**

Q15078

**Immunogen**

A synthetic peptide of human CDK5R1

**Synonyms**

p23; p25; p35; CDK5R; NCK5A; CDK5P35; p35nck5a; CDK5R1

## Contact

 | [www.abclonal.com](http://www.abclonal.com)

## Product Information

**Source**

Rabbit

**Isotype**

IgG

**Purification**

Affinity purification

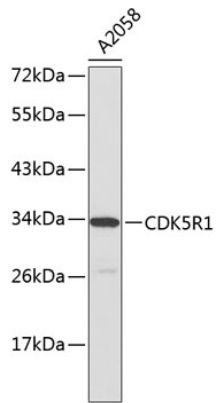
**Storage**

Store at 4°C. Avoid freeze / thaw cycles.

Buffer: PBS with 0.02% sodium azide, pH7.3.

## Validation Data

---



Western blot analysis of extracts of A2058 cells, using CDK5R1 antibody (A0197).  
Secondary antibody: HRP Goat Anti-Rabbit IgG (H+L) (AS014) at 1:10000 dilution.  
Lysates/proteins: 25µg per lane.  
Blocking buffer: 3% nonfat dry milk in TBST.