

ARRB1 Rabbit pAb

Catalog No.: A0190

Basic Information

Catalog No.

A0190

Observed MW

43-54kDa

Calculated MW

46kDa/47kDa

Category

Primary antibody

Applications

WB, IHC, IF

Cross-Reactivity

Human, Mouse, Rat

Recommended Dilutions

| | |
|------------|----------------|
| WB | 1:500 - 1:2000 |
| IHC | 1:50 - 1:200 |
| IF | 1:50 - 1:200 |

Contact

 | www.abclonal.com

Background

Members of arrestin/beta-arrestin protein family are thought to participate in agonist-mediated desensitization of G-protein-coupled receptors and cause specific dampening of cellular responses to stimuli such as hormones, neurotransmitters, or sensory signals. Arrestin beta 1 is a cytosolic protein and acts as a cofactor in the beta-adrenergic receptor kinase (BARK) mediated desensitization of beta-adrenergic receptors. Besides the central nervous system, it is expressed at high levels in peripheral blood leukocytes, and thus the BARK/beta-arrestin system is believed to play a major role in regulating receptor-mediated immune functions. Alternatively spliced transcripts encoding different isoforms of arrestin beta 1 have been described.

Immunogen Information

| | |
|----------------|-------------------|
| Gene ID | Swiss Prot |
| 408 | P49407 |

Immunogen

Recombinant fusion protein containing a sequence corresponding to amino acids 169-418 of human ARRB1 (NP_004032.2).

Synonyms

ARRB1;ARB1;ARR1

Product Information

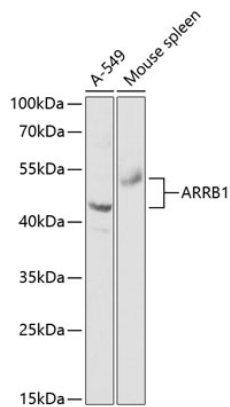
| | | |
|---------------|----------------|-----------------------|
| Source | Isotype | Purification |
| Rabbit | IgG | Affinity purification |

Storage

Store at -20°C. Avoid freeze / thaw cycles.

Buffer: PBS with 0.02% sodium azide, 50% glycerol, pH7.3.

Validation Data

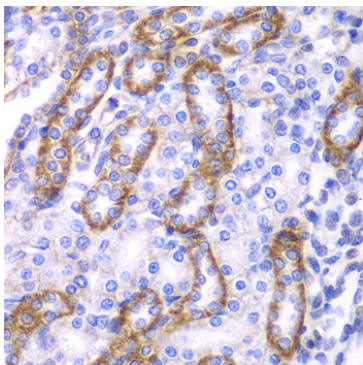


Western blot analysis of extracts of various cell lines, using ARRB1 antibody (A0190) at 1:1000 dilution.

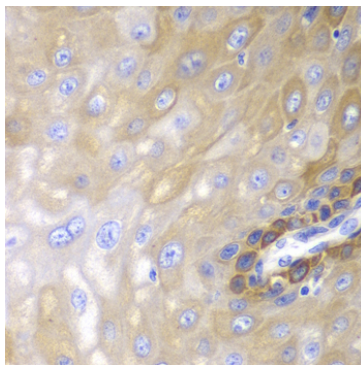
Secondary antibody: HRP Goat Anti-Rabbit IgG (H+L) (AS014) at 1:10000 dilution.

Lysates/proteins: 25ug per lane.

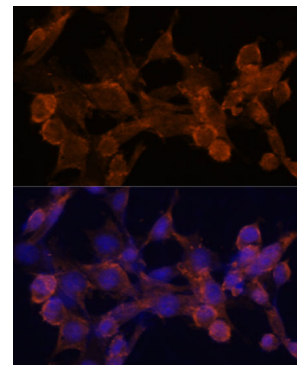
Blocking buffer: 3% nonfat dry milk in TBST.



Immunohistochemistry of paraffin-embedded rat kidney using ARRB1 antibody (A0190) at dilution of 1:100 (40x lens).



Immunohistochemistry of paraffin-embedded human esophagus using ARRB1 antibody (A0190) at dilution of 1:100 (40x lens).



Immunofluorescence analysis of NIH/3T3 cells using ARRB1 antibody (A0190) at dilution of 1:100. Blue: DAPI for nuclear staining.