

# GDF15 Rabbit pAb

Catalog No.: A0185 **3 Publications**

## Basic Information

**Catalog No.**

A0185

**Observed MW**

35KDa

**Calculated MW**

34kDa

**Category**

Primary antibody

**Applications**

WB, IHC, IF, IP

**Cross-Reactivity**

Human, Mouse, Rat

## Recommended Dilutions

<b>WB</b>	1:500 - 1:2000
<b>IHC</b>	1:50 - 1:100
<b>IF</b>	1:50 - 1:200
<b>IP</b>	1:50 - 1:200

## Contact

 | [www.abclonal.com](http://www.abclonal.com)

## Background

The protein encoded by this gene belongs to the transforming growth factor-beta (TGF-beta) family. The protein is expressed in a broad range of cell types, acts as a pleiotropic cytokine and is involved in the stress reponse program of cells after cellular injury. Increased protein levels are associated with disease states such as tissue hypoxia, inflammation, acute injury and oxidative stress.

## Immunogen Information

<b>Gene ID</b>	<b>Swiss Prot</b>
9518	Q99988

**Immunogen**

Recombinant fusion protein containing a sequence corresponding to amino acids 49-308 of human GDF15 (NP\_004855.2).

**Synonyms**

GDF15;GDF-15;MIC-1;MIC1;NAG-1;PDF;PLAB;PTGFB

## Product Information

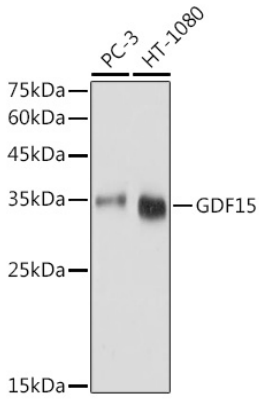
<b>Source</b>	<b>Isotype</b>	<b>Purification</b>
Rabbit	IgG	Affinity purification

**Storage**

Store at -20°C. Avoid freeze / thaw cycles.

Buffer: PBS with 0.02% sodium azide,50% glycerol,pH7.3.

## Validation Data



Western blot analysis of extracts of various cell lines, using GDF15 antibody (A0185) at 1:1000 dilution.

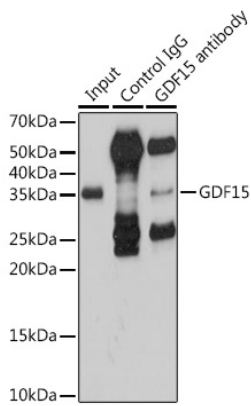
Secondary antibody: HRP Goat Anti-Rabbit IgG (H+L) (AS014) at 1:10000 dilution.

Lysates/proteins: 25ug per lane.

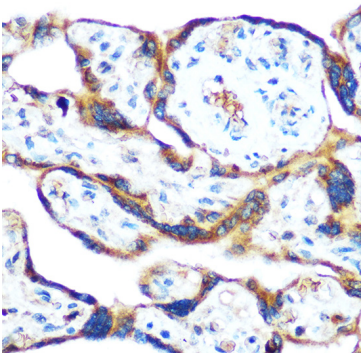
Blocking buffer: 3% nonfat dry milk in TBST.

Detection: ECL Basic Kit (RM00020).

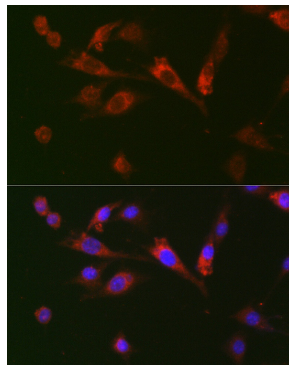
Exposure time: 1s.



Immunoprecipitation analysis of 200ug extracts of HT-1080 cells using 3ug GDF15 antibody (A0185). Western blot was performed from the immunoprecipitate using GDF15 antibody (A0185) at a dilution of 1:1000.



Immunohistochemistry of paraffin-embedded human placenta using GDF15 Rabbit pAb (A0185) at dilution of 1:100 (40x lens).



Immunofluorescence analysis of BALB-3T3 cells using GDF15 Rabbit pAb (A0185) at dilution of 1:100 (40x lens). Blue: DAPI for nuclear staining.