

# PIM1 Rabbit pAb

**Catalog No.:** A0175

## Basic Information

**Catalog No.**

A0175

**Observed MW**

38kDa

**Calculated MW**

35kDa/45kDa

**Category**

Primary antibody

**Applications**

WB

**Cross-Reactivity**

Rat

## Recommended Dilutions

**WB** 1:500 - 1:2000

## Background

The protein encoded by this gene belongs to the Ser/Thr protein kinase family, and PIM subfamily. This gene is expressed primarily in B-lymphoid and myeloid cell lines, and is overexpressed in hematopoietic malignancies and in prostate cancer. It plays a role in signal transduction in blood cells, contributing to both cell proliferation and survival, and thus provides a selective advantage in tumorigenesis. Both the human and orthologous mouse genes have been reported to encode two isoforms (with preferential cellular localization) resulting from the use of alternative in-frame translation initiation codons, the upstream non-AUG (CUG) and downstream AUG codons (PMIDs:16186805, 1825810).

## Immunogen Information

**Gene ID**

5292

**Swiss Prot**

P11309

**Immunogen**

Recombinant fusion protein containing a sequence corresponding to amino acids 1-313 of human PIM1 (NP\_002639.1).

**Synonyms**

PIM;PIM1;PIM1

## Contact

 | [www.abclonal.com](http://www.abclonal.com)

## Product Information

**Source**

Rabbit

**Isotype**

IgG

**Purification**

Affinity purification

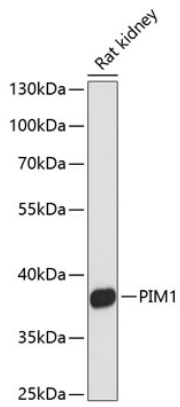
**Storage**

Store at -20°C. Avoid freeze / thaw cycles.

Buffer: PBS with 0.02% sodium azide,50% glycerol,pH7.3.

## Validation Data

---



Western blot analysis of extracts of rat kidney, using PIM1 antibody (A0175) at 1:3000 dilution.  
Secondary antibody: HRP Goat Anti-Rabbit IgG (H+L) (AS014) at 1:10000 dilution.  
Lysates/proteins: 25ug per lane.  
Blocking buffer: 3% nonfat dry milk in TBST.  
Detection: ECL Basic Kit (RM00020).  
Exposure time: 90s.