

# PGP9.5/UCHL1 Rabbit pAb

Catalog No.: A0148 **1 Publications**

## Basic Information

**Catalog No.**

A0148

**Observed MW**

25kDa

**Calculated MW**

24kDa

**Category**

Primary antibody

**Applications**

WB, IF

**Cross-Reactivity**

Human, Mouse

## Recommended Dilutions

**WB** 1:500 - 1:2000**IF** 1:50 - 1:200

## Background

The protein encoded by this gene belongs to the peptidase C12 family. This enzyme is a thiol protease that hydrolyzes a peptide bond at the C-terminal glycine of ubiquitin. This gene is specifically expressed in the neurons and in cells of the diffuse neuroendocrine system. Mutations in this gene may be associated with Parkinson disease.

## Immunogen Information

**Gene ID**

7345

**Swiss Prot**

P09936

**Immunogen**

Recombinant fusion protein containing a sequence corresponding to amino acids 59-223 of human PGP9.5/PGP9.5/UCHL1 (NP\_004172.2).

**Synonyms**

HEL-117;HEL-S-53;NDGOA;PARK5;PGP 9.5;PGP9.5;PGP95;SPG79;Uch-L1;UCHL1

## Contact

[www.abclonal.com](http://www.abclonal.com)

## Product Information

**Source**

Rabbit

**Isotype**

IgG

**Purification**

Affinity purification

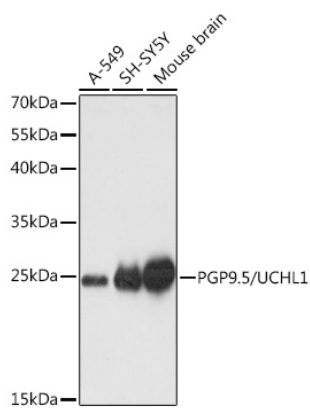
**Storage**

Store at -20°C. Avoid freeze / thaw cycles.

Buffer: PBS with 0.02% sodium azide,50% glycerol,pH7.3.

## Validation Data

---



Western blot analysis of extracts of various cell lines, using PGP9.5/PGP9.5/UCHL1 antibody (A0148) at 1:1000 dilution.

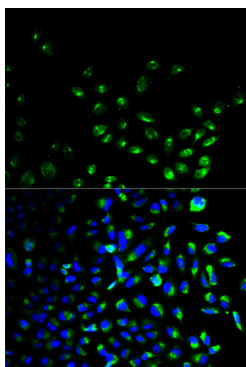
Secondary antibody: HRP Goat Anti-Rabbit IgG (H+L) (AS014) at 1:10000 dilution.

Lysates/proteins: 25ug per lane.

Blocking buffer: 3% nonfat dry milk in TBST.

Detection: ECL Basic Kit (RM00020).

Exposure time: 1s.



Immunofluorescence analysis of HeLa cells using PGP9.5/PGP9.5/UCHL1 antibody (A0148). Blue: DAPI for nuclear staining.