

# Bmi1 Rabbit pAb

Catalog No.: A0147

## Basic Information

### Observed MW

47kDa

### Calculated MW

37kDa

### Category

Primary antibody

### Applications

WB,IF/ICC,FC

### Cross-Reactivity

Human, Mouse

## Background

This gene encodes a ring finger protein that is major component of the polycomb group complex 1 (PRC1). This complex functions through chromatin remodeling as an essential epigenetic repressor of multiple regulatory genes involved in embryonic development and self-renewal in somatic stem cells. This protein also plays a central role in DNA damage repair. This gene is an oncogene and aberrant expression is associated with numerous cancers and is associated with resistance to certain chemotherapies. A pseudogene of this gene is found on chromosome X. Read-through transcription also exists between this gene and the upstream COMM domain containing 3 (COMMD3) gene.

## Recommended Dilutions

<b>WB</b>	1:500 - 1:1000
<b>IF/ICC</b>	1:20 - 1:50
<b>FC</b>	1:20 - 1:50

## Immunogen Information

<b>Gene ID</b>	<b>Swiss Prot</b>
648	P35226

### Immunogen

A synthetic peptide of human Bmi1

### Synonyms

PCGF4; RNF51; FLV12/BMI1; flvi-2/bmi-1; Bmi1

## Contact

 | [www.abclonal.com](http://www.abclonal.com)

## Product Information

<b>Source</b>	<b>Isotype</b>	<b>Purification</b>
Rabbit	IgG	Affinity purification

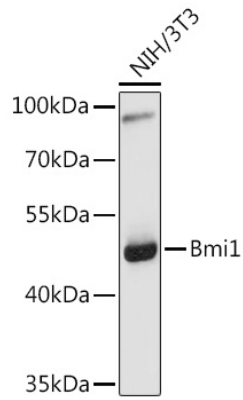
### Storage

Store at 4°C. Avoid freeze / thaw cycles.

Buffer: PBS with 0.02% sodium azide,pH7.3.

## Validation Data

---



Western blot analysis of extracts of NIH/3T3 cells, using Bmi1 antibody (A0147).  
Secondary antibody: HRP Goat Anti-Rabbit IgG (H+L) (AS014) at 1:10000 dilution.  
Lysates/proteins: 25µg per lane.  
Blocking buffer: 3% nonfat dry milk in TBST.