

# SLC9A3R1 Rabbit pAb

**Catalog No.:** A0146

## Basic Information

**Catalog No.**

A0146

**Observed MW**

50kDa

**Calculated MW**

22kDa/38kDa

**Category**

Primary antibody

**Applications**

WB

**Cross-Reactivity**

Human, Mouse, Rat

## Recommended Dilutions

**WB** 1:1000 - 1:4000

## Background

This gene encodes a sodium/hydrogen exchanger regulatory cofactor. The protein interacts with and regulates various proteins including the cystic fibrosis transmembrane conductance regulator and G-protein coupled receptors such as the beta2-adrenergic receptor and the parathyroid hormone 1 receptor. The protein also interacts with proteins that function as linkers between integral membrane and cytoskeletal proteins. The protein localizes to actin-rich structures including membrane ruffles, microvilli, and filopodia. Mutations in this gene result in hypophosphatemic nephrolithiasis/osteoporosis type 2, and loss of heterozygosity of this gene is implicated in breast cancer.

## Immunogen Information

**Gene ID**

9368

**Swiss Prot**

O14745


**Immunogen**

Recombinant fusion protein containing a sequence corresponding to amino acids 189-358 of human SLC9A3R1 (NP\_004243.1).

**Synonyms**

SLC9A3R1;EBP50;NHERF;NHERF-1;NHERF1;NPHLOP2

## Contact

 | [www.abclonal.com](http://www.abclonal.com)

## Product Information

**Source**

Rabbit

**Isotype**

IgG

**Purification**

Affinity purification

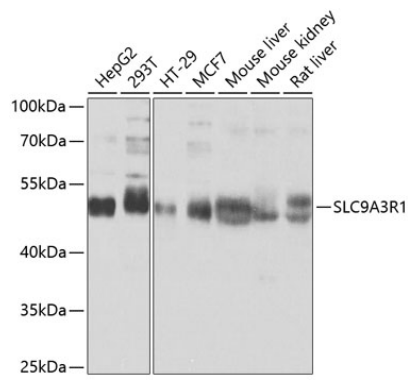
**Storage**

Store at -20°C. Avoid freeze / thaw cycles.

Buffer: PBS with 0.02% sodium azide,50% glycerol,pH7.3.

## Validation Data

---



Western blot analysis of extracts of various cell lines, using SLC9A3R1 antibody (A0146) at 1:1000 dilution.

Secondary antibody: HRP Goat Anti-Rabbit IgG (H+L) (AS014) at 1:10000 dilution.

Lysates/proteins: 25ug per lane.

Blocking buffer: 3% nonfat dry milk in TBST.

Detection: ECL Basic Kit (RM00020).

Exposure time: 1s.