

SPHK1 Rabbit pAb

Catalog No.: A0139

Basic Information

Catalog No.

A0139

Observed MW

55kDa

Calculated MW

42kDa/43kDa/51kDa

Category

Primary antibody

Applications

WB, IHC

Cross-Reactivity

Human, Mouse, Rat

Recommended Dilutions

WB	1:500 - 1:2000
IHC	1:50 - 1:200

Background

The protein encoded by this gene catalyzes the phosphorylation of sphingosine to form sphingosine-1-phosphate (S1P), a lipid mediator with both intra- and extracellular functions. Intracellularly, S1P regulates proliferation and survival, and extracellularly, it is a ligand for cell surface G protein-coupled receptors. This protein, and its product S1P, play a key role in TNF-alpha signaling and the NF-kappa-B activation pathway important in inflammatory, antiapoptotic, and immune processes. Alternatively spliced transcript variants encoding different isoforms have been found for this gene.

Immunogen Information

Gene ID	Swiss Prot
8877	Q9NYA1

Immunogen

Recombinant fusion protein containing a sequence corresponding to amino acids 50-384 of human SPHK1 (NP_001136074.1).

Synonyms

SPHK1;SPHK

Contact

 | www.abclonal.com

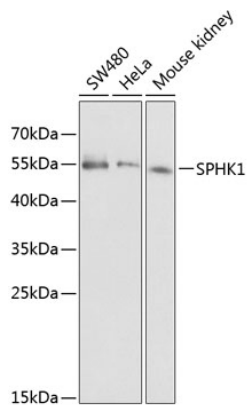
Product Information

Source	Isotype	Purification
Rabbit	IgG	Affinity purification

Storage

Store at -20°C. Avoid freeze / thaw cycles.
Buffer: PBS with 0.02% sodium azide,50% glycerol,pH7.3.

Validation Data

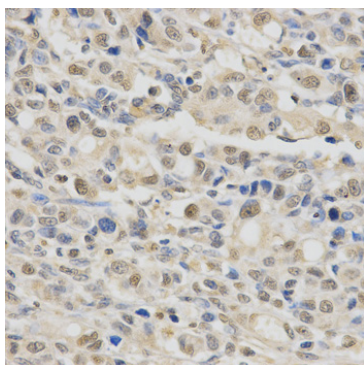


Western blot analysis of extracts of various cell lines, using SPHK1 antibody (A0139) at 1:1000 dilution.

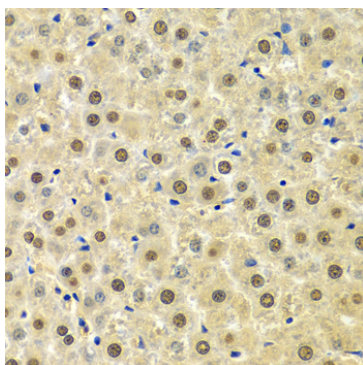
Secondary antibody: HRP Goat Anti-Rabbit IgG (H+L) (AS014) at 1:10000 dilution.

Lysates/proteins: 25ug per lane.

Blocking buffer: 3% nonfat dry milk in TBST.



Immunohistochemistry of paraffin-embedded human gastric cancer using SPHK1 Antibody (A0139) at dilution of 1:200 (40x lens).



Immunohistochemistry of paraffin-embedded rat liver using SPHK1 Antibody (A0139) at dilution of 1:100 (40x lens).