

# MSP/MST1 Rabbit mAb

Catalog No.: A0109 **Recombinant**

## Basic Information

### Catalog No.

A0109

### Observed MW

85kDa

### Calculated MW

85kDa

### Category

Primary antibody

### Applications

WB, IHC, IF

### Cross-Reactivity

Human, Mouse, Rat

## Recommended Dilutions

<b>WB</b>	1:500 - 1:2000
<b>IHC</b>	1:50 - 1:200
<b>IF</b>	1:50 - 1:200

## Contact

 | [www.abclonal.com](http://www.abclonal.com)

## Background

The protein encoded by this gene contains four kringle domains and a serine protease domain, similar to that found in hepatic growth factor. Despite the presence of the serine protease domain, the encoded protein may not have any proteolytic activity. The receptor for this protein is RON tyrosine kinase, which upon activation stimulates ciliary motility of ciliated epithelial lung cells. This protein is secreted and cleaved to form an alpha chain and a beta chain bridged by disulfide bonds. [provided by RefSeq, Jan 2010]

## Immunogen Information

<b>Gene ID</b>	<b>Swiss Prot</b>
4485	P26927

### Immunogen

A synthesized peptide derived from human MSP/MST1

### Synonyms

D3F15S2; DNF15S2; HGFL; MSP; NF15S2

## Product Information

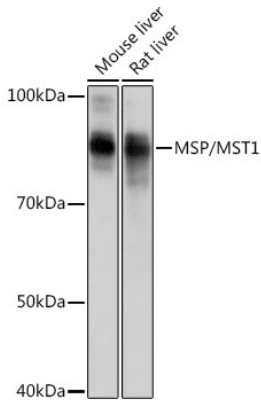
<b>Source</b>	<b>Isotype</b>	<b>Purification</b>
Rabbit	IgG	Affinity purification

### Storage

Store at -20°C. Avoid freeze / thaw cycles.

Buffer: PBS with 0.02% sodium azide, 0.05% BSA, 50% glycerol, pH7.3.

## Validation Data



Western blot analysis of extracts of various cell lines, using MSP/MST1 Rabbit mAb (A0109) at 1:1000 dilution.

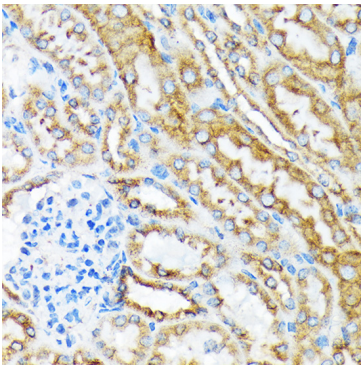
Secondary antibody: HRP Goat Anti-Rabbit IgG (H+L) (AS014) at 1:10000 dilution.

Lysates/proteins: 25ug per lane.

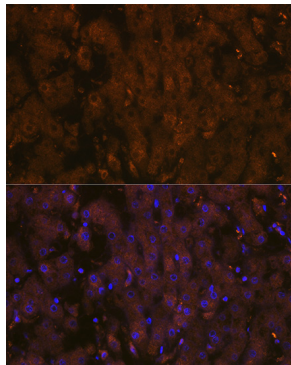
Blocking buffer: 3% nonfat dry milk in TBST.

Detection: ECL Basic Kit (RM00020).

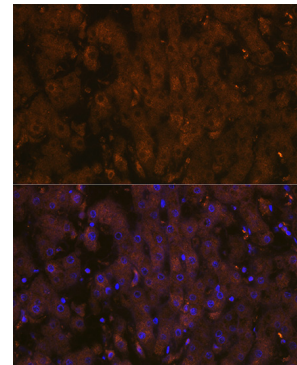
Exposure time: 3s.



Immunohistochemistry of paraffin-embedded mouse kidney using MSP/MST1 Rabbit mAb (A0109) at dilution of 1:100 (40x lens). Perform microwave antigen retrieval with 10 mM Tris/EDTA buffer pH 9.0 before commencing with IHC staining protocol.



Immunofluorescence analysis of rat liver using MSP/MST1 Rabbit mAb (A0109) at dilution of 1:100 (40x lens). Blue: DAPI for nuclear staining.



Immunofluorescence analysis of human liver using MSP/MST1 Rabbit mAb (A0109) at dilution of 1:100 (40x lens). Blue: DAPI for nuclear staining.