

CDK6 Rabbit mAb

Catalog No.: A0106 **Recombinant**

Basic Information

Catalog No.

A0106

Observed MW

37kDa

Calculated MW

37kDa

Category

Primary antibody

Applications

WB

Cross-Reactivity

Human, Rat

Recommended Dilutions

WB 1:500 - 1:2000

Background

The protein encoded by this gene is a member of the cyclin-dependent protein kinase (CDK) family. CDK family members are highly similar to the gene products of *Saccharomyces cerevisiae cdc28*, and *Schizosaccharomyces pombe cdc2*, and are known to be important regulators of cell cycle progression. This kinase is a catalytic subunit of the protein kinase complex that is important for cell cycle G1 phase progression and G1/S transition. The activity of this kinase first appears in mid-G1 phase, which is controlled by the regulatory subunits including D-type cyclins and members of INK4 family of CDK inhibitors. This kinase, as well as CDK4, has been shown to phosphorylate, and thus regulate the activity of, tumor suppressor protein Rb. Expression of this gene is up-regulated in some types of cancer. Multiple alternatively spliced variants, encoding the same protein, have been identified. [provided by RefSeq, Nov 2009]

Immunogen Information

Gene ID

1021

Swiss Prot

Q00534

Immunogen

A synthesized peptide derived from human CDK6

Synonyms

MCPH12; PLSTIRE

Contact

 | www.abclonal.com

Product Information

Source

Rabbit

Isotype

IgG

Purification

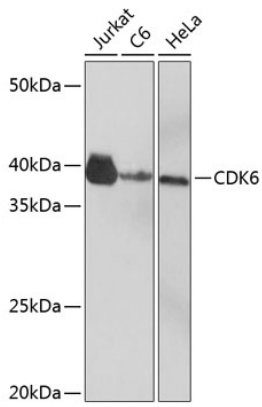
Affinity purification

Storage

Store at -20°C. Avoid freeze / thaw cycles.

Buffer: PBS with 0.02% sodium azide, 0.05% BSA, 50% glycerol, pH7.3.

Validation Data



Western blot analysis of extracts of various cell lines, using CDK6 Rabbit mAb (A0106) at 1: 1000 dilution.

Secondary antibody: HRP Goat Anti-Rabbit IgG (H+L) (AS014) at 1:10000 dilution.

Lysates/proteins: 25ug per lane.

Blocking buffer: 3% nonfat dry milk in TBST.

Detection: ECL Basic Kit (RM00020).

Exposure time: 3min.