

Integrin beta 3 (ITGB3/CD61) Rabbit pAb

Catalog No.: A0076

Basic Information

Catalog No.

A0076

Observed MW

112kDa

Calculated MW

86kDa/87kDa

Category

Primary antibody

Applications

WB

Cross-Reactivity

Human, Mouse, Rat

Recommended Dilutions

WB 1:500 - 1:2000

Background

The ITGB3 protein product is the integrin beta chain beta 3. Integrins are integral cell-surface proteins composed of an alpha chain and a beta chain. A given chain may combine with multiple partners resulting in different integrins. Integrin beta 3 is found along with the alpha IIb chain in platelets. Integrins are known to participate in cell adhesion as well as cell-surface mediated signalling.

Immunogen Information

Gene ID

3690

Swiss Prot

P05106

Immunogen

Recombinant fusion protein containing a sequence corresponding to amino acids 609-788 of human Integrin beta 3 (Integrin beta 3 (ITGB3/CD61)/CD61) (NP_000203.2).

Synonyms

BDPLT16;BDPLT2;CD61;GP3A;GPIIIa;GT;Integrin beta 3;ITGB3

Contact

 | www.abclonal.com

Product Information

Source

Rabbit

Isotype

IgG

Purification

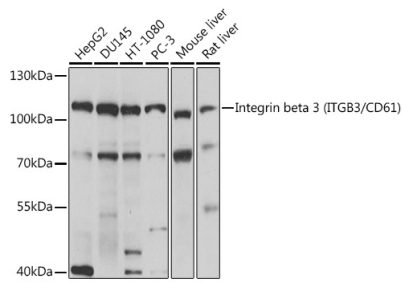
Affinity purification

Storage

Store at -20°C. Avoid freeze / thaw cycles.

Buffer: PBS with 0.02% sodium azide, 50% glycerol, pH7.3.

Validation Data



Western blot analysis of extracts of various cell lines, using Integrin beta 3 (Integrin beta 3 (ITGB3/CD61)/CD61) antibody (A0076) at 1:1000 dilution.

Secondary antibody: HRP Goat Anti-Rabbit IgG (H+L) (AS014) at 1:10000 dilution.

Lysates/proteins: 25ug per lane.

Blocking buffer: 3% nonfat dry milk in TBST.

Detection: ECL Basic Kit (RM00020).

Exposure time: 10s.