

MMP14/MT1-MMP Rabbit mAb

Catalog No.: A0067 **Recombinant** **1 Publications**

Basic Information

Catalog No.

A0067

Observed MW

52KDa/60KDa

Calculated MW

65kDa

Category

Primary antibody

Applications

WB

Cross-Reactivity

Human, Mouse, Rat

Recommended Dilutions

WB 1:500 - 1:2000

Background

Proteins of the matrix metalloproteinase (MMP) family are involved in the breakdown of extracellular matrix in normal physiological processes, such as embryonic development, reproduction, and tissue remodeling, as well as in disease processes, such as arthritis and metastasis. Most MMP's are secreted as inactive proproteins which are activated when cleaved by extracellular proteinases. However, the protein encoded by this gene is a member of the membrane-type MMP (MT-MMP) subfamily; each member of this subfamily contains a potential transmembrane domain suggesting that these proteins are expressed at the cell surface rather than secreted. This protein activates MMP2 protein, and this activity may be involved in tumor invasion. [provided by RefSeq, Jul 2008]

Immunogen Information

Gene ID

4323

Swiss Prot

P50281

Immunogen

A synthetic peptide corresponding to a sequence within amino acids 100-200 of human MMP14/MMP14/MT1-MMP (P50281).

Synonyms

MMP-14; MMP-X1; MT-MMP; MT-MMP 1; MT1-MMP; MT1MMP; MTMMP1; WNCHRS

Contact

 | www.abclonal.com

Product Information

Source

Rabbit

Isotype

IgG

Purification

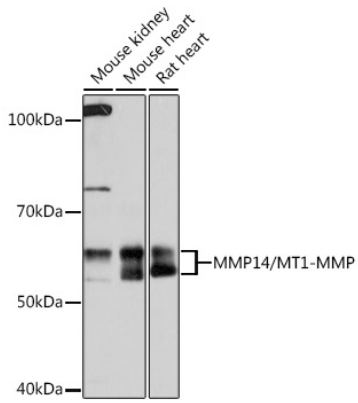
Affinity purification

Storage

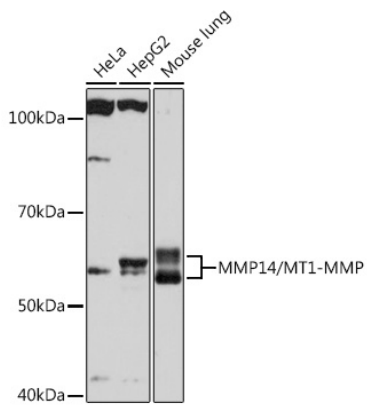
Store at -20°C. Avoid freeze / thaw cycles.

Buffer: PBS with 0.02% sodium azide, 0.05% BSA, 50% glycerol, pH7.3.

Validation Data



Western blot analysis of extracts of various cell lines, using MMP14/MMP14/MT1-MMP Rabbit mAb (A0067) at 1: 1000 dilution.
Secondary antibody: HRP Goat Anti-Rabbit IgG (H+L) (AS014) at 1:10000 dilution.
Lysates/proteins: 25ug per lane.
Blocking buffer: 3% nonfat dry milk in TBST.
Detection: ECL Basic Kit (RM00020).
Exposure time: 90s.



Western blot analysis of extracts of various cell lines, using MMP14/MMP14/MT1-MMP Rabbit mAb (A0067) at 1: 1000 dilution.
Secondary antibody: HRP Goat Anti-Rabbit IgG (H+L) (AS014) at 1:10000 dilution.
Lysates/proteins: 25ug per lane.
Blocking buffer: 3% nonfat dry milk in TBST.
Detection: ECL Basic Kit (RM00020).
Exposure time: 10s.