

A0050

Leader in Biomolecular Solutions for Life Science



Presenilin 1 Rabbit pAb

Catalog No.: A0050

Basic Information

Observed MW

53kDa

Calculated MW

53kDa

Category

Mouse Monoclonal Antibody

Applications

WB

Cross-Reactivity

Human

Background

Alzheimer's disease (AD) patients with an inherited form of the disease carry mutations in the presenilin proteins (PSEN1; PSEN2) or in the amyloid precursor protein (APP). These disease-linked mutations result in increased production of the longer form of amyloid-beta (main component of amyloid deposits found in AD brains). Presenilins are postulated to regulate APP processing through their effects on gamma-secretase, an enzyme that cleaves APP. Also, it is thought that the presenilins are involved in the cleavage of the Notch receptor, such that they either directly regulate gamma-secretase activity or themselves are protease enzymes. Several alternatively spliced transcript variants encoding different isoforms have been identified for this gene, the full-length nature of only some have been determined.

Recommended Dilutions

WB 1:500 - 1:2000

Immunogen Information

Gene ID

5663

Swiss Prot

P49768

Immunogen

A synthetic peptide of human Presenilin 1

Synonyms

AD3; FAD; PS1; PS-1; S182; PSNL1; ACNINV3; Presenilin 1

Contact



www.abclonal.com

Product Information

Source

Rabbit

Isotype

IgG

Purification

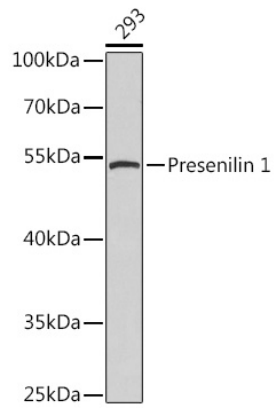
Affinity purification

Storage

Store at 4°C. Avoid freeze / thaw cycles.

Buffer: PBS with 0.02% sodium azide, pH7.3.

Validation Data



Western blot analysis of extracts of 293T cells, using Presenilin 1 antibody (A0050).
Secondary antibody: HRP Goat Anti-Rabbit IgG (H+L) (AS014) at 1:10000 dilution.
Lysates/proteins: 25µg per lane.
Blocking buffer: 3% nonfat dry milk in TBST.