

# STIP1 Rabbit mAb

Catalog No.: A0036 **Recombinant**

## Basic Information

### Catalog No.

A0036

### Observed MW

68kDa

### Calculated MW

63kDa

### Category

Primary antibody

### Applications

WB,IHC

### Cross-Reactivity

Human, Mouse, Rat

## Recommended Dilutions

<b>WB</b>	1:500 - 1:2000
<b>IHC</b>	1:50 - 1:200

## Contact

 | [www.abclonal.com](http://www.abclonal.com)

## Background

STIP1 is an adaptor protein that coordinates the functions of HSP70 (see HSPA1A; MIM 140550) and HSP90 (see HSP90AA1; MIM 140571) in protein folding. It is thought to assist in the transfer of proteins from HSP70 to HSP90 by binding both HSP90 and substrate-bound HSP70. STIP1 also stimulates the ATPase activity of HSP70 and inhibits the ATPase activity of HSP90, suggesting that it regulates both the conformations and ATPase cycles of these chaperones (Song and Masison, 2005 [PubMed 16100115]).[supplied by OMIM, Jul 2009]

## Immunogen Information

<b>Gene ID</b>	<b>Swiss Prot</b>
10963	P31948

### Immunogen

A synthesized peptide derived from human STIP1

### Synonyms

HEL-S-94n; HOP; IEF-SSP-3521; P60; STI1; STI1L

## Product Information

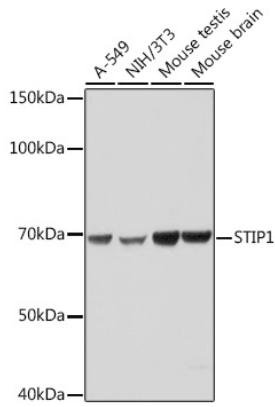
<b>Source</b>	<b>Isotype</b>	<b>Purification</b>
Rabbit	IgG	Affinity purification

### Storage

Store at -20°C. Avoid freeze / thaw cycles.

Buffer: PBS with 0.02% sodium azide,0.05% BSA,50% glycerol,pH7.3.

## Validation Data



Western blot analysis of extracts of various cell lines, using STIP1 Rabbit mAb (A0036) at 1:1000 dilution.

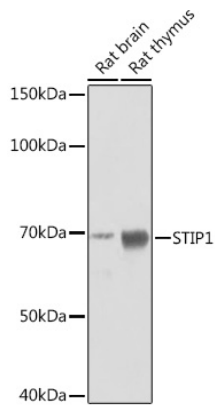
Secondary antibody: HRP Goat Anti-Rabbit IgG (H+L) (AS014) at 1:10000 dilution.

Lysates/proteins: 25ug per lane.

Blocking buffer: 3% nonfat dry milk in TBST.

Detection: ECL Basic Kit (RM00020).

Exposure time: 1s.



Western blot analysis of extracts of various cell lines, using STIP1 Rabbit mAb (A0036) at 1:1000 dilution.

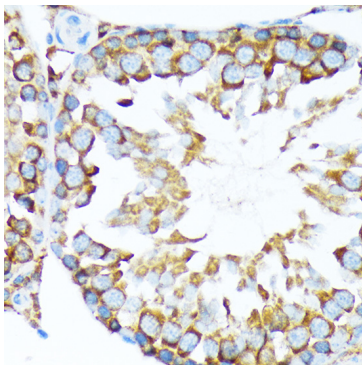
Secondary antibody: HRP Goat Anti-Rabbit IgG (H+L) (AS014) at 1:10000 dilution.

Lysates/proteins: 25ug per lane.

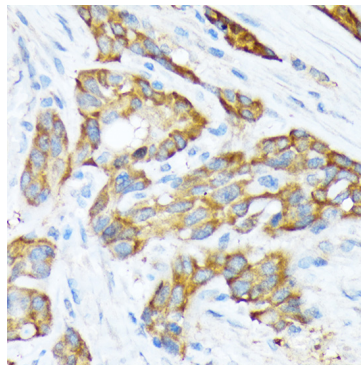
Blocking buffer: 3% nonfat dry milk in TBST.

Detection: ECL Basic Kit (RM00020).

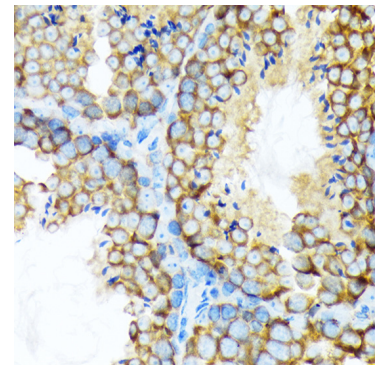
Exposure time: 10s.



Immunohistochemistry of paraffin-embedded rat testis using STIP1 Rabbit mAb (A0036) at dilution of 1:100 (40x lens).



Immunohistochemistry of paraffin-embedded human esophageal cancer using STIP1 Rabbit mAb (A0036) at dilution of 1:100 (40x lens).



Immunohistochemistry of paraffin-embedded mouse testis using STIP1 Rabbit mAb (A0036) at dilution of 1:100 (40x lens).