

# Cyclin A2 Rabbit pAb

Catalog No.: A0034

## Basic Information

---

### Observed MW

56kDa

### Calculated MW

49kDa

### Category

Primary antibody

### Applications

WB,FC

### Cross-Reactivity

Human

## Background

---

The protein encoded by this gene belongs to the highly conserved cyclin family, whose members function as regulators of the cell cycle. This protein binds and activates cyclin-dependent kinase 2 and thus promotes transition through G1/S and G2/M.

## Recommended Dilutions

---

<b>WB</b>	1:500 - 1:2000
<b>FC</b>	1:20 - 1:50

## Immunogen Information

---

<b>Gene ID</b>	<b>Swiss Prot</b>
890	P20248

### Immunogen

A synthetic peptide of human Cyclin A2

### Synonyms

CCN1; CCNA; Cyclin A2

## Contact

---

 | [www.abclonal.com](http://www.abclonal.com)

## Product Information

---

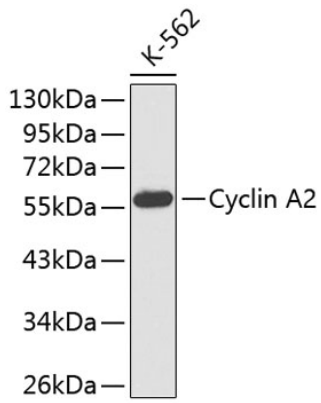
<b>Source</b>	<b>Isotype</b>	<b>Purification</b>
Rabbit	IgG	Affinity purification

### Storage

Store at 4°C. Avoid freeze / thaw cycles.  
Buffer: PBS with 0.02% sodium azide,pH7.3.

## Validation Data

---



Western blot analysis of extracts of K-562 cells, using Cyclin A2 antibody (A0034).  
Secondary antibody: HRP Goat Anti-Rabbit IgG (H+L) (A5014) at 1:10000 dilution.  
Lysates/proteins: 25µg per lane.  
Blocking buffer: 3% nonfat dry milk in TBST.