

STAT1 Rabbit pAb

Catalog No.: A0027 **9 Publications**

Basic Information

Catalog No.

A0027

Observed MW

84kDa

Calculated MW

83kDa/87kDa

Category

Primary antibody

Applications

WB, IHC

Cross-Reactivity

Human, Mouse, Rat

Recommended Dilutions

WB	1:500 - 1:2000
IHC	1:50 - 1:200

Contact

 | www.abclonal.com

Background

The protein encoded by this gene is a member of the STAT protein family. In response to cytokines and growth factors, STAT family members are phosphorylated by the receptor associated kinases, and then form homo- or heterodimers that translocate to the cell nucleus where they act as transcription activators. This protein can be activated by various ligands including interferon-alpha, interferon-gamma, EGF, PDGF and IL6. This protein mediates the expression of a variety of genes, which is thought to be important for cell viability in response to different cell stimuli and pathogens. Two alternatively spliced transcript variants encoding distinct isoforms have been described.

Immunogen Information

Gene ID	Swiss Prot
6772	P42224

Immunogen

Recombinant fusion protein containing a sequence corresponding to amino acids 513-712 of human STAT1 (NP_644671.1).

Synonyms

CANDF7;IMD31A;IMD31B;IMD31C;ISGF-3;STAT91;STAT1 alpha;STAT1

Product Information

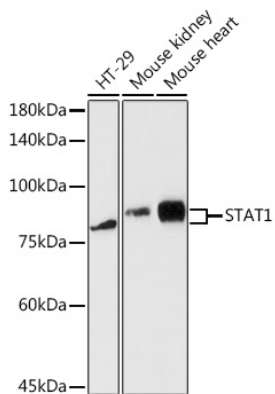
Source	Isotype	Purification
Rabbit	IgG	Affinity purification

Storage

Store at -20°C. Avoid freeze / thaw cycles.

Buffer: PBS with 0.02% sodium azide, 50% glycerol, pH7.3.

Validation Data



Western blot analysis of extracts of various cell lines, using STAT1 antibody (A0027) at 1:5000 dilution.

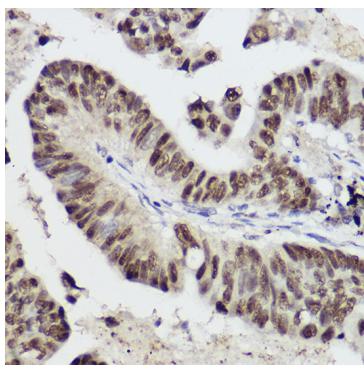
Secondary antibody: HRP Goat Anti-Rabbit IgG (H+L) (AS014) at 1:10000 dilution.

Lysates/proteins: 25ug per lane.

Blocking buffer: 3% nonfat dry milk in TBST.

Detection: ECL Enhanced Kit (RM00021).

Exposure time: 180s.



Immunohistochemistry of paraffin-embedded human lung cancer using STAT1 Rabbit pAb (A0027) at dilution of 1:50 (40x lens).