

A0022

Leader in Biomolecular Solutions for Life Science



ENO2 Rabbit pAb

Catalog No.: A0022

Basic Information

Observed MW

45kDa

Calculated MW

47kDa

Category

Polyclonal Antibody

Applications

WB

Cross-Reactivity

Human, Mouse

Background

This gene encodes one of the three enolase isoenzymes found in mammals. This isoenzyme, a homodimer, is found in mature neurons and cells of neuronal origin. A switch from alpha enolase to gamma enolase occurs in neural tissue during development in rats and primates.

Recommended Dilutions

WB 1:200 - 1:2000

Immunogen Information

Gene ID

2026

Swiss Prot

P09104

Immunogen

A synthetic peptide of human ENO2

Synonyms

NSE; HEL-S-279; ENO2

Contact



www.abclonal.com

Product Information

Source

Rabbit

Isotype

IgG

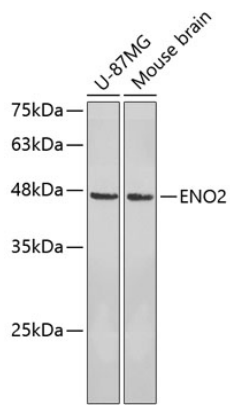
Purification

Affinity purification

Storage

Store at 4°C. Avoid freeze / thaw cycles.
Buffer: PBS with 0.02% sodium azide, pH 7.3.

Validation Data



Western blot analysis of various lysates using ENO2 Rabbit pAb (A0022).
Secondary antibody: HRP Goat Anti-Rabbit IgG (H+L) (AS014) at 1:10000 dilution.
Lysates/proteins: 25 μ g per lane.
Blocking buffer: 3% nonfat dry milk in TBST.