

KAT9/Elp3 Rabbit mAb

Catalog No.: A0020 **Recombinant**

Basic Information

Catalog No.

A0020

Observed MW

62kDa

Calculated MW

62kDa

Category

Primary antibody

Applications

WB,IHC

Cross-Reactivity

Human, Mouse, Rat

Recommended Dilutions

WB	1:500 - 1:2000
IHC	1:50 - 1:200

Background

ELP3 is the catalytic subunit of the histone acetyltransferase elongator complex, which contributes to transcript elongation and also regulates the maturation of projection neurons (Creppe et al., 2009 [PubMed 19185337]).[supplied by OMIM, Apr 2009]

Immunogen Information

Gene ID	Swiss Prot
55140	Q9H9T3

Immunogen

A synthesized peptide derived from human KAT9/Elp3

Synonyms

KAT9

Contact

 | www.abclonal.com

Product Information

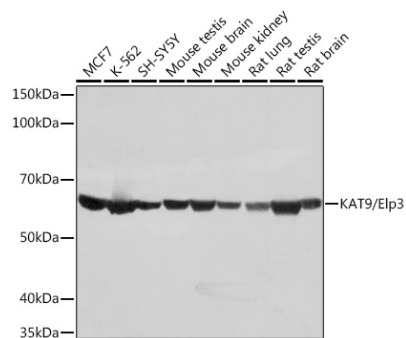
Source	Isotype	Purification
Rabbit	IgG	Affinity purification

Storage

Store at -20°C. Avoid freeze / thaw cycles.

Buffer: PBS with 0.02% sodium azide,0.05% BSA,50% glycerol,pH7.3.

Validation Data



Western blot analysis of extracts of various cell lines, using KAT9/Elp3 Rabbit mAb (A0020) at 1:1000 dilution.

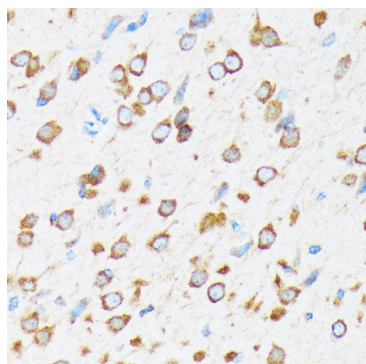
Secondary antibody: HRP Goat Anti-Rabbit IgG (H+L) (AS014) at 1:10000 dilution.

Lysates/proteins: 25ug per lane.

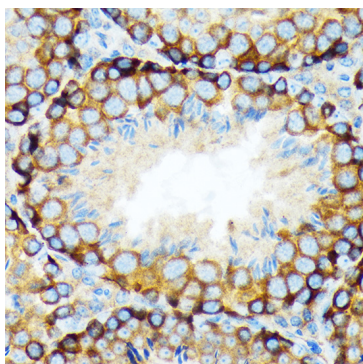
Blocking buffer: 3% nonfat dry milk in TBST.

Detection: ECL Basic Kit (RM00020).

Exposure time: 1s.



Immunohistochemistry of paraffin-embedded rat brain using KAT9/Elp3 Rabbit mAb (A0020) at dilution of 1:100 (40x lens).



Immunohistochemistry of paraffin-embedded mouse testis using KAT9/Elp3 Rabbit mAb (A0020) at dilution of 1:100 (40x lens).