

Cytokeratin 4 (KRT4) Rabbit mAb

Catalog No.: A0013 **Recombinant**

Basic Information

Catalog No.

A0013

Observed MW

57kDa

Calculated MW

57kDa

Category

Primary antibody

Applications

WB,IHC,IF

Cross-Reactivity

Human, Mouse, Rat

Recommended Dilutions

WB	1:500 - 1:2000
IHC	1:50 - 1:200
IF	1:50 - 1:200

Contact

 | www.abclonal.com

Background

The protein encoded by this gene is a member of the keratin gene family. The type II cytokeratins consist of basic or neutral proteins which are arranged in pairs of heterotypic keratin chains coexpressed during differentiation of simple and stratified epithelial tissues. This type II cytokeratin is specifically expressed in differentiated layers of the mucosal and esophageal epithelia with family member KRT13. Mutations in these genes have been associated with White Sponge Nevus, characterized by oral, esophageal, and anal leukoplakia. The type II cytokeratins are clustered in a region of chromosome 12q12-q13. [provided by RefSeq, Jul 2008]

Immunogen Information

Gene ID	Swiss Prot
3851	P19013

Immunogen

A synthesized peptide derived from human Cytokeratin 4 (KRT4) (KRT4)

Synonyms

CK-4; CK4; CYK4; K4; WSN1

Product Information

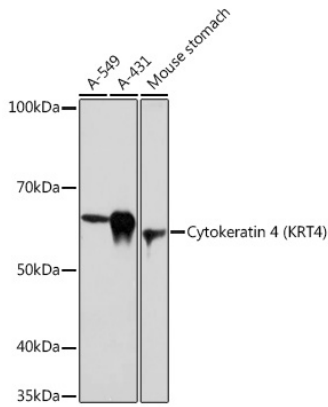
Source	Isotype	Purification
Rabbit	IgG	Affinity purification

Storage

Store at -20°C. Avoid freeze / thaw cycles.

Buffer: PBS with 0.02% sodium azide,0.05% BSA,50% glycerol,pH7.3.

Validation Data



Western blot analysis of extracts of various cell lines, using Cytokeratin 4 (KRT4) Rabbit mAb (A0013) at 1:1000 dilution.

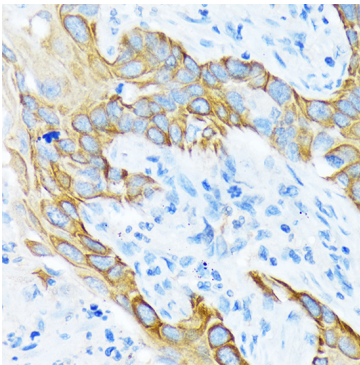
Secondary antibody: HRP Goat Anti-Rabbit IgG (H+L) (AS014) at 1:10000 dilution.

Lysates/proteins: 25ug per lane.

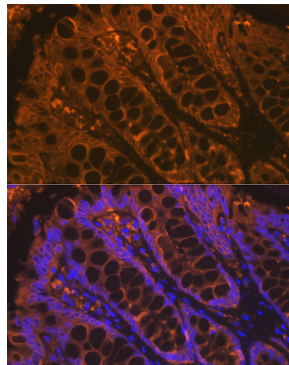
Blocking buffer: 3% nonfat dry milk in TBST.

Detection: ECL Basic Kit (RM00020).

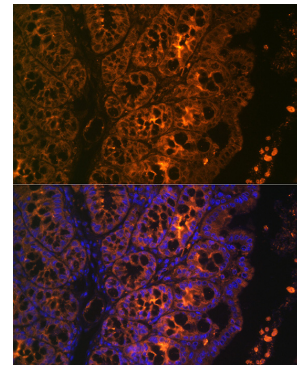
Exposure time: 30s.



Immunohistochemistry of paraffin-embedded human lung squamous carcinoma tissue using Cytokeratin 4 (KRT4) Rabbit mAb (A0013) at dilution of 1:100 (40x lens).



Immunofluorescence analysis of rat rectum using Cytokeratin 4 (KRT4) Rabbit mAb (A0013) at dilution of 1:100 (40x lens). Blue: DAPI for nuclear staining.



Immunofluorescence analysis of mouse large intestine using Cytokeratin 4 (KRT4) Rabbit mAb (A0013) at dilution of 1:100 (40x lens). Blue: DAPI for nuclear staining.