

# TLR4 Rabbit pAb

Catalog No.: A0007 **2 Publications**

## Basic Information

**Catalog No.**

A0007

**Observed MW**

110kDa

**Calculated MW**

73kDa/91kDa/95kDa

**Category**

Primary antibody

**Applications**

WB, IF

**Cross-Reactivity**

Human, Mouse

## Recommended Dilutions

<b>WB</b>	1:500 - 1:2000
<b>IF</b>	1:50 - 1:200

## Contact

 | [www.abclonal.com](http://www.abclonal.com)

## Background

The protein encoded by this gene is a member of the Toll-like receptor (TLR) family which plays a fundamental role in pathogen recognition and activation of innate immunity. TLRs are highly conserved from *Drosophila* to humans and share structural and functional similarities. They recognize pathogen-associated molecular patterns that are expressed on infectious agents, and mediate the production of cytokines necessary for the development of effective immunity. The various TLRs exhibit different patterns of expression. This receptor has been implicated in signal transduction events induced by lipopolysaccharide (LPS) found in most gram-negative bacteria. Mutations in this gene have been associated with differences in LPS responsiveness. Multiple transcript variants encoding different isoforms have been found for this gene.

## Immunogen Information

<b>Gene ID</b>	<b>Swiss Prot</b>
7099	O00206

**Immunogen**

Recombinant fusion protein containing a sequence corresponding to amino acids 470-630 of human TLR4 (NP\_612564.1).

**Synonyms**

TLR4;ARMD10;CD284;TLR-4;TOLL

## Product Information

<b>Source</b>	<b>Isotype</b>	<b>Purification</b>
Rabbit	IgG	Affinity purification

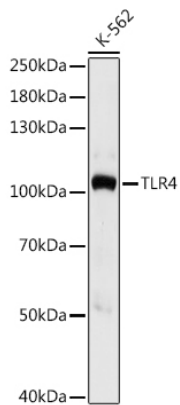
**Storage**

Store at -20°C. Avoid freeze / thaw cycles.

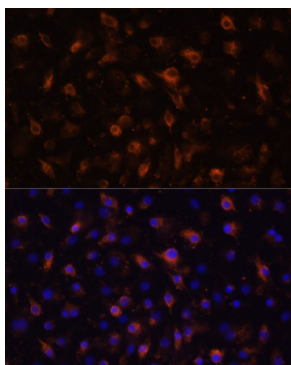
Buffer: PBS with 0.02% sodium azide, 50% glycerol, pH7.3.

## Validation Data

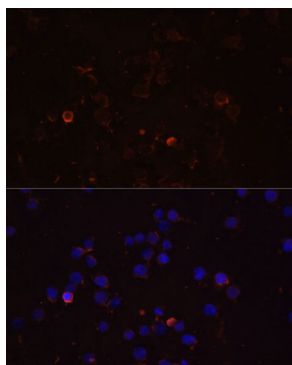
---



Western blot analysis of extracts of K-562 cells, using TLR4 antibody (A0007) at 1:1000 dilution.  
Secondary antibody: HRP Goat Anti-Rabbit IgG (H+L) (AS014) at 1:10000 dilution.  
Lysates/proteins: 25ug per lane.  
Blocking buffer: 3% nonfat dry milk in TBST.  
Detection: ECL Basic Kit (RM00020).  
Exposure time: 5s.



Immunofluorescence analysis of RAW264.7 cells using TLR4 Polyclonal Antibody (A0007) at dilution of 1:100 (40x lens).  
Blue: DAPI for nuclear staining.



Immunofluorescence analysis of THP-1 cells using TLR4 Polyclonal Antibody (A0007) at dilution of 1:100 (40x lens).  
Blue: DAPI for nuclear staining.