

Tau Rabbit pAb

Catalog No.: A0002

Basic Information

Catalog No.

A0002

Observed MW

50-70kDa

Calculated MW

32-45kDa/78- 80kDa

Category

Primary antibody

Applications

WB, IHC, IF

Cross-Reactivity

Human, Mouse, Rat

Recommended Dilutions

WB	1:500 - 1:2000
IHC	1:50 - 1:200
IF	1:50 - 1:200

Contact

 | www.abclonal.com

Background

This gene encodes the microtubule-associated protein tau (MAPT) whose transcript undergoes complex, regulated alternative splicing, giving rise to several mRNA species. MAPT transcripts are differentially expressed in the nervous system, depending on stage of neuronal maturation and neuron type. MAPT gene mutations have been associated with several neurodegenerative disorders such as Alzheimer's disease, Pick's disease, frontotemporal dementia, cortico-basal degeneration and progressive supranuclear palsy.

Immunogen Information

Gene ID	Swiss Prot
4137	P10636

Immunogen

A synthetic peptide corresponding to a sequence within amino acids 600 to the C-terminus of human Tau (NP_058519.3).

Synonyms

DDPAC;FTDP-17;MAPTL;MSTD;MTBT1;MTBT2;PPND;PPP1R103;TAU;MAPT;Tau

Product Information

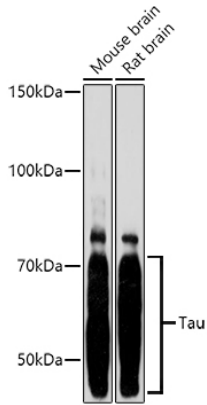
Source	Isotype	Purification
Rabbit	IgG	Affinity purification

Storage

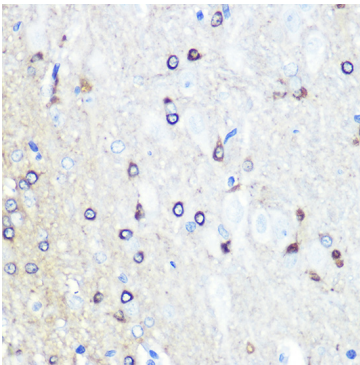
Store at -20°C. Avoid freeze / thaw cycles.

Buffer: PBS with 0.02% sodium azide,50% glycerol,pH7.3.

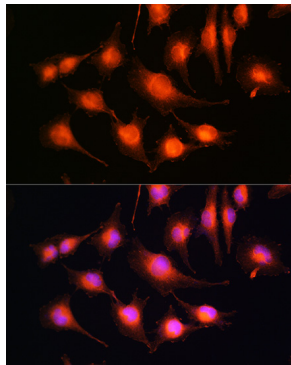
Validation Data



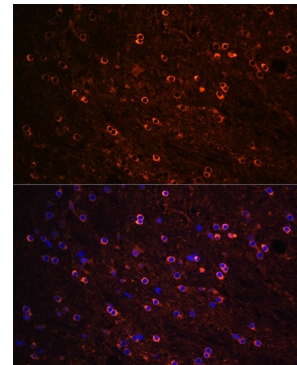
Western blot analysis of extracts of various cell lines, using Tau antibody (A0002) at 1:1000 dilution.
Secondary antibody: HRP Goat Anti-Rabbit IgG (H+L) (AS014) at 1:10000 dilution.
Lysates/proteins: 25ug per lane.
Blocking buffer: 3% nonfat dry milk in TBST.
Detection: ECL Basic Kit (RM00020).
Exposure time: 180s.



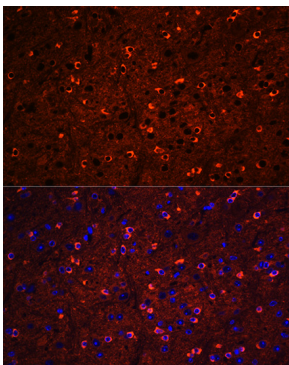
Immunohistochemistry of paraffin-embedded rat brain using Tau Rabbit pAb (A0002) at dilution of 1:100 (40x lens).



Immunofluorescence analysis of U-251 MG cells using Tau Rabbit pAb (A0002) at dilution of 1:100 (40x lens). Blue: DAPI for nuclear staining.



Immunofluorescence analysis of rat brain using Tau Rabbit pAb (A0002) at dilution of 1:100 (40x lens). Blue: DAPI for nuclear staining.



Immunofluorescence analysis of mouse brain using Tau Rabbit pAb (A0002) at dilution of 1:100 (40x lens). Blue: DAPI for nuclear staining.