

RP10142LQ

Leader in Biomolecular Solutions for Life Science



# Recombinant Human K48-Ub2 protein

Catalog No.: RP10142LQ

Recombinant

## Sequence Information

Species	Gene ID	Swiss Prot
Human		P0CG47

### Tags

No Tag

### Synonyms

K48-Ub2

## Background

Ub chains are formed by conjugating the C-terminal glycine residue of Ub onto any of seven internal lysine residues or the amino group of the previous Ub. Ub chains are classified by the lysine residue used to link Ubs; different Ub chain topologies can result in different signals. For instance, Ub chains linked through lysine 6, 11, 27, 29, 33 and 48 are capable of targeting proteins for proteasomal degradation; in contrast, Ub chains linked through lysine 63 or the N-terminal amino group (linear Ub chains) often play important nonproteolytic functions including regulation of kinase activation and protein translation. All Ub chain products are produced by using of human wild type Ub reacting with specific E2s.

## Basic Information

### Product Information

Source	Purification
<I>E. coli</I>	~95% by SDS-PAGE

### Endotoxin

### Formulation

20 mM Tris, 150 mM NaCl, 2 mM βME,  
10% Glycerol

### Reconstitution

### Description

### Bio-Activity

### Storage

This product is stable at ≤ -70°C for up to 6 months from the date of receipt. <br/>For optimal storage, aliquot into smaller quantities after centrifugation and store at recommended temperature.

Avoid repeated freeze/thaw cycles.

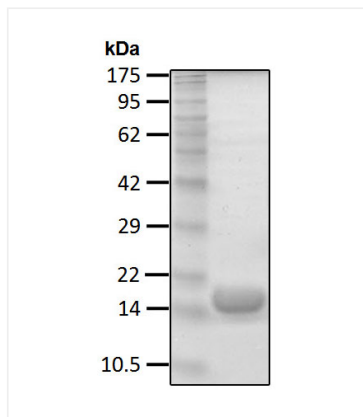
## Contact



[www.abclonal.com](http://www.abclonal.com)

## Validation Data

---



Recombinant human K48-Ub2 protein was determined by SDS-PAGE with Coomassie Blue.