

RP02614

Leader in Biomolecular Solutions for Life Science



Recombinant Mouse BAMBI Protein

Catalog No.: RP02614

Recombinant

Sequence Information

Species	Gene ID	Swiss Prot
Mouse		Q9D0L6

Tags
C-hFc

Synonyms
Nma; Bambi

Product Information

Source	Purification
HEK293 cells	> 95% as determined by Tris-Bis PAGE > 95% as determined by HPLC

Endotoxin
Less than 1EU per µg by the LAL method.

Formulation

Reconstitution

Centrifuge the tube before opening.
Reconstitute to a concentration of 0.1-0.5 mg/mL in sterile distilled water.
Avoid vortex or vigorously pipetting the protein. For long term storage, it is recommended to add a carrier protein or stabilizer (e.g. 0.1% BSA, 5% HSA, 10% FBS or 5% Trehalose), and aliquot the reconstituted protein solution to minimize free-thaw cycles.

Contact



www.abclonal.com

Background

Bone morphogenic protein and activin membrane-bound inhibitor (BAMBI) is a transmembrane protein that affects the growth, development and muscle regeneration of the body by regulating the TGF-β, BMP and Wnt signaling pathways. In brief, BAMBI may be a functional gene for the differentiation of bovine preadipocytes and myoblasts, and variations in the BAMBI genomic region, especially the combined haplotype H1H4, may benefit marker-assisted selection in cattle.

Basic Information

Description

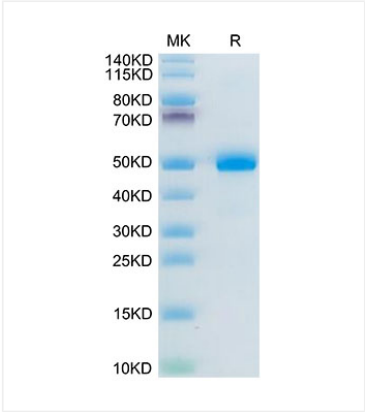
Recombinant Mouse BAMBI Protein is expressed from Expi293 with hFc tag at the C-terminal. It contains Glu27-Ala152.

Bio-Activity

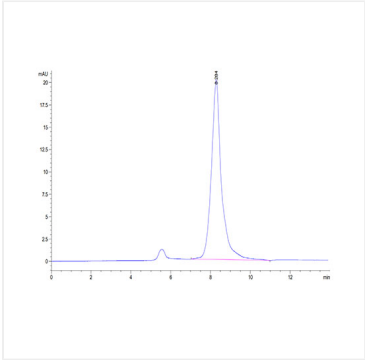
Storage

Store the lyophilized protein at -20°C to -80°C for long term. After reconstitution, the protein solution is stable at -20°C for 3 months, at 2-8°C for up to 1 week. Avoid repeated freeze/thaw cycles.

Validation Data



Mouse BAMBI on Tris-Bis PAGE under reduced condition. The purity is greater than 95%.



The purity of Mouse BAMBI is greater than 95% as determined by SEC-HPLC.