

RP02413

Leader in Biomolecular Solutions for Life Science



Recombinant Mouse&Human IL-12B&IL-23A Protein

Catalog No.: RP02413

Recombinant

Sequence Information

| Species | Gene ID | Swiss Prot |
|-------------|------------|-----------------|
| Mouse&Human | 16160&5156 | P43432-1&Q9NPF7 |

Tags

C-His&Avi

Synonyms

IL23 alpha ;IL12 beta ;IL23 alpha & IL12 beta

Product Information

Source

HEK293 cells

Purification

> 95% by Tris-Bis PAGE;> 95% by SEC-HPLC

Endotoxin

< 1 EU/μg of the protein by LAL method.

Formulation

Lyophilized from a 0.22 μm filtered solution of PBS, pH 7.4.

Reconstitution

Centrifuge the tube before opening. Reconstitute to a concentration of 0.1-0.5 mg/mL in sterile distilled water. Avoid vortex or vigorously pipetting the protein. For long term storage, it is recommended to add a carrier protein or stabilizer (e.g. 0.1% BSA, 5% HSA, 10% FBS or 5% Trehalose), and aliquot the reconstituted protein solution to minimize freeze-thaw cycles.

Background

Basic Information

Description

Recombinant Human IL23 alpha & IL12 beta Protein is produced by Expi293 expression system. The target protein is expressed with sequence (Met23-Ser335(Mouse IL-12 beta)&Ile23-Ser328(Human IL-23 alpha)) of Human IL23 alpha & IL12 beta fused with a His tag and Avi tag at the C-terminal.

Bio-Activity

Immobilized Human IL-23R alpha & Mouse IL-12, His at 0.5 μg/mL (100 μL/Well) on the plate. Dose response curve for Human IL23R, mFc with the EC₅₀ of 0.36 μg/mL determined by ELISA.

Storage

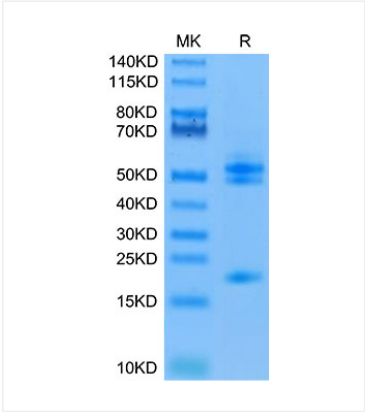
Store the lyophilized protein at -20°C to -80°C for long term. After reconstitution, the protein solution is stable at -20°C for 3 months, at 2-8°C for up to 1 week. Avoid repeated freeze/thaw cycles.

Contact

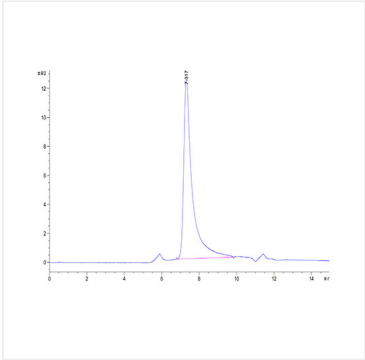


www.abclonal.com

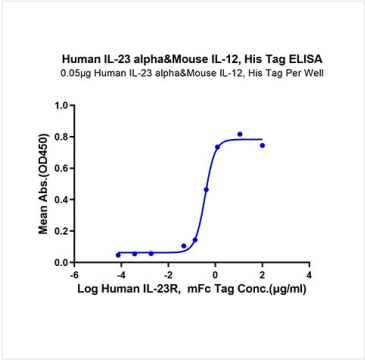
Validation Data



Human IL-23 alpha&Mouse IL-12 beta on Tris-Bis PAGE under reduced condition. The purity is greater than 95%.



The purity of Human IL-23 alpha&Mouse IL-12 beta is greater than 95% as determined by SEC-HPLC.



Immobilized Human IL-23 alpha&Mouse IL-12 beta, His Tag at 0.5µg/ml (100µl/Well) on the plate. Dose response curve for Human IL-23R, mFc with the EC₅₀ of 0.36µg/ml determined by ELISA.