

RP02041

Leader in Biomolecular Solutions for Life Science



# Recombinant Human DLL3 Protein

Catalog No.: RP02041

Recombinant

## Sequence Information

Species	Gene ID	Swiss Prot
Human	10683	Q9NYJ7

### Tags

N-His

### Synonyms

SCD01;DLL3

## Product Information

Source	Purification
HEK293 cells	> 95% by SDS-PAGE.

### Endotoxin

< 0.1 EU/μg of the protein by LAL method.

### Formulation

Lyophilized from a 0.2 μm filtered solution of PBS, pH 7.4. Contact us for customized product form or formulation.

### Reconstitution

Centrifuge the tube before opening. Reconstitute to a concentration of 0.1-0.5 mg/mL in sterile distilled water. Avoid vortex or vigorously pipetting the protein. For long term storage, it is recommended to add a carrier protein or stabilizer (e.g. 0.1% BSA, 5% HSA, 10% FBS or 5% Trehalose), and aliquot the reconstituted protein solution to minimize free-thaw cycles.

## Contact



[www.abclonal.com](http://www.abclonal.com)

## Background

Delta-like 3 (Drosophila), also known as DLL3, is a protein which in humans is encoded by the DLL3 gene. Two transcript variants encoding distinct isoforms have been identified for this gene. Mutations in this gene cause the autosomal recessive genetic disorder Jarcho-Levin syndrome. Expression of the gene occurs in Neuroendocrine tumors, which has been targeted as a potential pathway for treatment.

## Basic Information

### Description

Recombinant Human CD40L/CD154 Protein is produced by HEK293 expression system. The target protein is expressed with sequence (Ala27-Arg491) of human DLL3 (Accession #Q9NYJ7) fused with a 6xHis, Flag tag at the N-terminus.

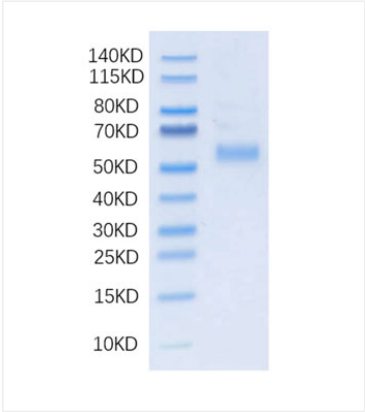
### Bio-Activity

Immobilized human DLL3 at 0.1 μg/mL (100 μL/well), dose response curve for Anti-Human DLL3 Ab with the EC<sub>50</sub> of 10.53 ng/mL determined by ELISA.

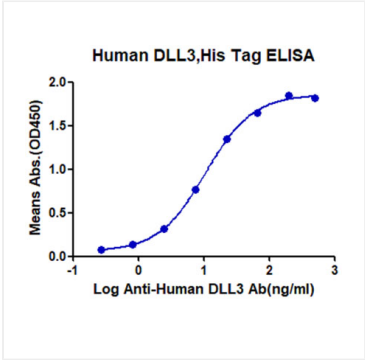
### Storage

Store the lyophilized protein at -20 °C to -80 °C for long term. After reconstitution, the protein solution is stable at -20 °C for 3 months, at 2-8 °C for up to 1 week. Avoid repeated freeze/thaw cycles.

Validation Data



Recombinant Human DLL3 Protein was determined by SDS-PAGE with Coomassie Blue, showing a band at 55 kDa-60 kDa.



Immobilized human DLL3, His Tag at 0.1μg/mL (100 μL/well), dose response curve for Anti-Human DLL3 Ab with the EC<sub>50</sub> of 10.53ng/mL determined by ELISA.