

RP01727

Leader in Biomolecular Solutions for Life Science



# Recombinant Mouse E-Cadherin/Cadherin-1/CDH1 Protein

Catalog No.: RP01727

Recombinant

## Sequence Information

Species	Gene ID	Swiss Prot
Mouse	12550	P09803

### Tags

C-6His

### Synonyms

Um; UVO; Ecad; ARC-1; E-cad; L-CAM; CDH1

## Product Information

Source	Purification
HEK293 cells	

### Endotoxin

< 0.1EU/μg

### Formulation

Lyophilized from a 0.22 μm filtered solution of PBS, pH 7.4.

### Reconstitution

Centrifuge the vial before opening. Reconstitute to a concentration of 0.1-0.5 mg/mL in sterile distilled water. Avoid vortex or vigorously pipetting the protein. For long term storage, it is recommended to add a carrier protein or stabilizer (e.g. 0.1% BSA, 5% HSA, 10% FBS or 5% Trehalose), and aliquot the reconstituted protein solution to minimize freeze-thaw cycles.

## Background

This protein is a member of the neurotrophic tyrosine kinase receptor (NTRK) family. This kinase is a membrane-bound receptor that, upon neurotrophin binding, phosphorylates itself and members of the MAPK pathway. The presence of this kinase leads to cell differentiation and may play a role in specifying sensory neuron subtypes. Mutations in this gene have been associated with congenital insensitivity to pain, anhidrosis, self-mutilating behavior, mental retardation and cancer. Alternate transcriptional splice variants of this gene have been found, but only three have been characterized to date.

## Basic Information

### Description

Recombinant Mouse E-Cadherin/Cadherin-1/CDH1 Protein is produced by HEK293 cells expression system. The target protein is expressed with sequence (Asp157-Val709) of mouse E-Cadherin/Cadherin-1/CDH1 (Accession #NP\_033994.1) fused with and a 6×His tag at the C-terminus.

### Bio-Activity

Measured by the ability of the immobilized protein to support the adhesion of the MCF-7 human breast cancer cells. The ED<sub>50</sub> for this effect is 0.82-3.29 μg/mL.

### Storage

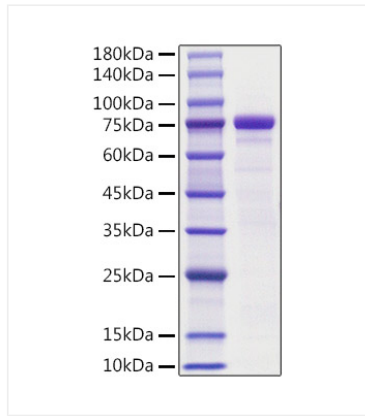
Store the lyophilized protein at -20°C to -80°C for 12 months. After reconstitution, the protein solution is stable at -20°C for 3 months, at 2-8°C for up to 1 week. Avoid repeated freeze/thaw cycles.

## Contact

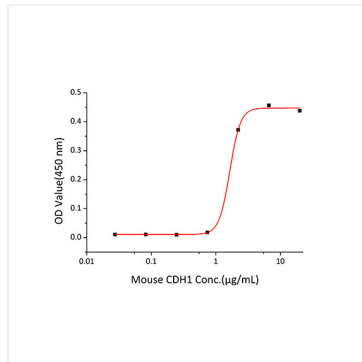


[www.abclonal.com](http://www.abclonal.com)

## Validation Data



Recombinant Mouse E-Cadherin/Cadherin-1/CDH1 Protein was determined by SDS-PAGE with Coomassie Blue, showing a band at 62-75kDa.



Recombinant Mouse CDH1 measured by the ability of the immobilized protein to support the adhesion of the MCF-7 human breast cancer cells. The ED<sub>50</sub> for this effect is 0.82-3.29 µg/mL.