

RP01320

Leader in Biomolecular Solutions for Life Science



# Recombinant Human IL-13 Protein

Catalog No.: RP01320

Recombinant

## Sequence Information

Species	Gene ID	Swiss Prot
Human	3596	P35225

### Tags

C-His

### Synonyms

IL13;IL-13;P600

## Background

Interleukin 13 (IL13) is also known as ALRH, and P600, is a single-chain glycosylated polypeptide, and is a cytokine critical in regulating inflammatory and immune responses. IL13 is secreted by many cell types, but especially by T helper type 2 (Th2) cells. IL-13 induces its effects through a multi-subunit receptor that includes the alpha chain of the IL-4 receptor (IL-4R $\alpha$ ) and at least one of two known IL-13-specific binding chains. As a cytokine, IL-13 protein is critical in regulating inflammatory, immune responses, and diseases. Also, it inhibits the production of pro-inflammatory cytokines and chemokines, and thus down-regulates macrophage activity. IL-13 protein and antibody are more importantly implicated as a central mediator of immunoregulatory processes in various cell types.

## Basic Information

### Product Information

Source	Purification
HEK293 cells	> 95% by SDS-PAGE.

### Endotoxin

< 0.1 EU/ $\mu$ g of the protein by LAL method.

### Formulation

Lyophilized from a 0.22  $\mu$ m filtered solution of PBS, pH 7.4.

### Reconstitution

Centrifuge the vial before opening. Reconstitute to a concentration of 0.1-0.5 mg/mL in sterile distilled water. Avoid vortex or vigorously pipetting the protein. For long term storage, it is recommended to add a carrier protein or stabilizer (e.g. 0.1% BSA, 5% HSA, 10% FBS or 5% Trehalose), and aliquot the reconstituted protein solution to minimize freeze-thaw cycles.

### Description

Recombinant Human IL-13 Protein is produced by HEK293 cells expression system. The target protein is expressed with sequence (Gly35-Asn146) of Human IL13 (Accession #NP\_002179.2) fused with an 6xHis tag at the C-terminus.

### Bio-Activity

Measured in a cell proliferation assay using TF-1 Human erythroleukemic cells. The ED<sub>50</sub> for this effect is 1-4 ng/mL, corresponding to a specific activity of  $0.25 \times 10^6 \sim 1.0 \times 10^6$  units/mg.

### Storage

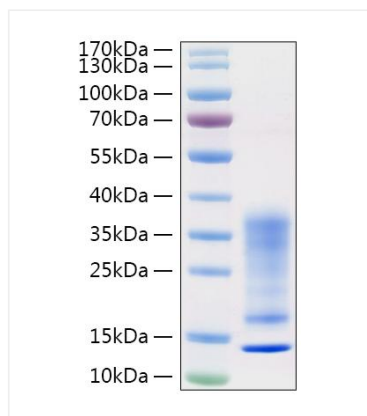
Store the lyophilized protein at -20°C to -80°C for long term. After reconstitution, the protein solution is stable at -20°C for 3 months, at 2-8°C for up to 1 week. Avoid repeated freeze/thaw cycles.

## Contact

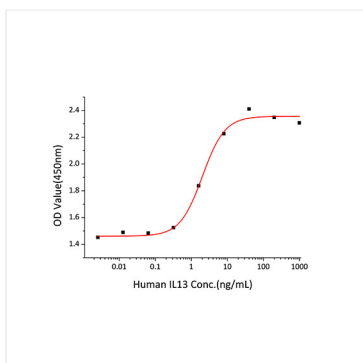


[www.abclonal.com](http://www.abclonal.com)

## Validation Data



Recombinant Human IL-13 Protein was determined by SDS-PAGE with Coomassie Blue, showing a band at 15&25-35kDa.



Recombinant Human IL-13 stimulates cell proliferation of the TF-1 Human erythroleukemic cells. The  $ED_{50}$  for this effect is 1-4 ng/mL, corresponding to a specific activity of  $0.25 \times 10^6 \sim 1.0 \times 10^6$  units/mg.