

RP01124

Leader in Biomolecular Solutions for Life Science



Recombinant Human IgG1 Fc Protein

Catalog No.: RP01124

Recombinant

Sequence Information

Species	Gene ID	Swiss Prot
Human	3500	P01857

Tags

No tag

Synonyms

Human
IgG;IGHG1;COB1;YAP;YAP2;YAP65;YKI;YA
P1;human IgG (Fc)

Background

As a monomeric immunoglobulin that is predominately involved in the secondary antibody response and the only isotype that can pass through the human placenta, Immunoglobulin G (IgG) is synthesized and secreted by plasma B cells, and constitutes 75% of serum immunoglobulins in humans. IgG antibodies protect the body against the pathogens by agglutination and immobilization, complement activation, toxin neutralization, as well as the antibody-dependent cell-mediated cytotoxicity (ADCC). IgG tetramer contains two heavy chains (50 kDa) and two light chains (25 kDa) linked by disulfide bonds, that is the two identical halves form the Y-like shape. IgG is digested by pepsin proteolysis into Fab fragment (antigen-binding fragment) and Fc fragment ("crystallizable" fragment). IgG1 is most abundant in serum among the four IgG subclasses (IgG1, 2, 3 and 4) and binds to Fc receptors (FcγR) on phagocytic cells with high affinity.

Product Information

Source	Purification
Mammalian	> 95% by SDS- PAGE.

Endotoxin

< 1.0 EU/μg of the protein by LAL method.

Formulation

Lyophilized from a 0.22 μm filtered solution of PBS, pH 7.4. Contact us for customized product form or formulation.

Reconstitution

Reconstitute to a concentration of 0.1-0.5 mg/mL in sterile distilled water.

Basic Information

Description

Recombinant Human IgG1 Fc Protein is produced by Mammalian expression system. The target protein is expressed with sequence (Asp104-Lys330) of human IgG1 Fc (Accession #P01857) fused with no tags.

Bio-Activity

Storage

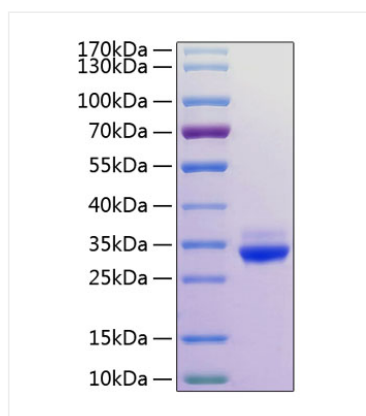
Store the lyophilized protein at -20°C to -80 °C for long term. After reconstitution, the protein solution is stable at -20 °C for 3 months, at 2-8 °C for up to 1 week. Avoid repeated freeze/thaw cycles.

Contact



www.abclonal.com

Validation Data



Recombinant Human IgG1 Fc Protein was determined by SDS-PAGE with Coomassie Blue, showing a band at 32 kDa.