

RP01098

Leader in Biomolecular Solutions for Life Science



Recombinant Human TEM8/ANTXR1 Protein

Catalog No.: RP01098

Recombinant

Sequence Information

Species	Gene ID	Swiss Prot
Human	84168	Q9H6X2

Tags

C-His

Synonyms

ANTXR1;ATR;GAPO;TEM8

Background

This protein is a type I transmembrane protein and is a tumor-specific endothelial marker that has been implicated in colorectal cancer. The encoded protein has been shown to also be a docking protein or receptor for Bacillus anthracis toxin, the causative agent of the disease, anthrax. The binding of the protective antigen (PA) component, of the tripartite anthrax toxin, to this receptor protein mediates delivery of toxin components to the cytosol of cells. Once inside the cell, the other two components of anthrax toxin, edema factor (EF) and lethal factor (LF) disrupt normal cellular processes. Three alternatively spliced variants that encode different protein isoforms have been described.

Basic Information

Description

Recombinant Human TEM8/ANTXR1 Protein is produced by Mammalian expression system. The target protein is expressed with sequence (Glu33-Lys321) of human ANTXR1 (Accession #Q9H6X2) fused with a 6×His tag at the C-terminus.

Bio-Activity

Storage

Store the lyophilized protein at -20°C to -80 °C for long term. After reconstitution, the protein solution is stable at -20 °C for 3 months, at 2-8 °C for up to 1 week. Avoid repeated freeze/thaw cycles.

Product Information

Source	Purification
HEK293 cells	> 95% by SDS-PAGE.

Endotoxin

< 1.0 EU/μg of the protein by LAL method.

Formulation

Lyophilized from a 0.22 μm filtered solution of 20mM PB, 150mM NaCl, pH7.4. Contact us for customized product form or formulation.

Reconstitution

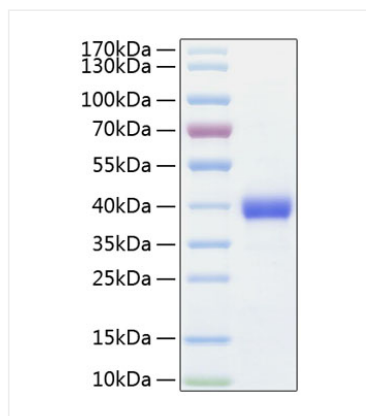
Centrifuge the tube before opening. Reconstitute to a concentration of 0.1-0.5 mg/mL in sterile distilled water. Avoid vortex or vigorously pipetting the protein. For long term storage, it is recommended to add a carrier protein or stabilizer (e.g. 0.1% BSA, 5% HSA, 10% FBS or 5% Trehalose), and aliquot the reconstituted protein solution to minimize free-thaw cycles.

Contact



www.abclonal.com

Validation Data



Recombinant Human TEM8/ANTXR1 Protein was determined by SDS-PAGE with Coomassie Blue, showing a band at 38 kDa.