

RP01097

Leader in Biomolecular Solutions for Life Science



# Recombinant Human DPEP1 Protein

Catalog No.: RP01097

Recombinant

## Sequence Information

Species	Gene ID	Swiss Prot
Human	1800	P16444

### Tags

C-His

### Synonyms

DPEP1;MBD1;MDP;RDP

## Product Information

Source	Purification
HEK293 cells	> 95% by SDS-PAGE.

### Endotoxin

< 1.0 EU/μg of the protein by LAL method.

### Formulation

Lyophilized from a 0.22 μm filtered solution of 20mM PB, 150mM NaCl, pH7.4. Contact us for customized product form or formulation.

### Reconstitution

Centrifuge the tube before opening. Reconstitute to a concentration of 0.1-0.5 mg/mL in sterile distilled water. Avoid vortex or vigorously pipetting the protein. For long term storage, it is recommended to add a carrier protein or stabilizer (e.g. 0.1% BSA, 5% HSA, 10% FBS or 5% Trehalose), and aliquot the reconstituted protein solution to minimize freeze-thaw cycles.

## Contact



[www.abclonal.com](http://www.abclonal.com)

## Background

This protein is a kidney membrane enzyme involved in the metabolism of glutathione and other similar proteins by dipeptide hydrolysis. The encoded protein is known to regulate leukotriene activity by catalyzing the conversion of leukotriene D4 to leukotriene E4. This protein uses zinc as a cofactor and acts as a disulfide-linked homodimer. Two transcript variants encoding the same protein have been found for this gene.

## Basic Information

### Description

Recombinant Human DPEP1 Protein is produced by Mammalian expression system. The target protein is expressed with sequence (Asp17-Ser385) of human Dipeptidase 1 (Accession #P16444) fused with a 6×His tag at the C-terminus.

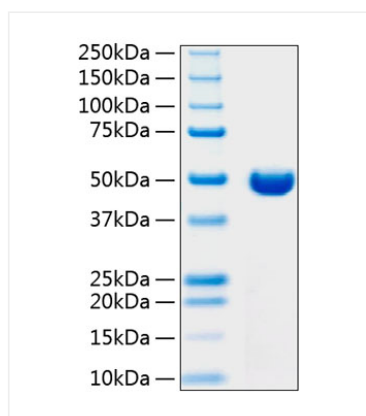
### Bio-Activity

### Storage

Store the lyophilized protein at -20°C to -80 °C for long term. After reconstitution, the protein solution is stable at -20 °C for 3 months, at 2-8 °C for up to 1 week. Avoid repeated freeze/thaw cycles.

## Validation Data

---



Recombinant Human DPEP1 Protein was determined by SDS-PAGE with Coomassie Blue, showing a band at 41 kDa.