

RP00537

Leader in Biomolecular Solutions for Life Science



# Recombinant Human IL-20RA Protein

Catalog No.: RP00537

Recombinant

## Sequence Information

Species	Gene ID	Swiss Prot
Human	53832	Q9UHF4

### Tags

C-His

### Synonyms

IL20RA;CRF2-8;IL-20R-  
alpha;IL-20R1;IL-20RA

## Background

Interleukin-20 Receptor Subunit  $\alpha$  (IL20RA) is a single-pass type I membrane protein that is a member of the type II cytokine receptor family. IL20RA is synthesized as a 553 amino acid glycoprotein precursor containing a 29 amino acid signal peptide, a 221 amino acid extracellular domain with two fibronectin type-III domains, a 24 amino acid transmembrane region, and a 279 amino acid intracellular domain. IL20RA is widely expressed with highest levels found in skin and testis and high levels in brain. IL20RA forms a heterodimer with IL20RB, and the complex serves as a receptor for IL19, IL20 and IL24. IL20RA also forms a heterodimer with the unique and specific receptor IL10RB and functions as the receptor for IL26.

## Basic Information

### Description

Recombinant Human IL-20RA/IL-20 R alpha Protein is produced by Human cells expression system. The target protein is expressed with sequence (Val30-Lys250) of human IL-20RA/IL-20 R alpha (Accession #Q9UHF4) fused with a 6×His tag at the C-terminus.

### Bio-Activity

### Storage

Store the lyophilized protein at -20 °C to -80 °C for long term. After reconstitution, the protein solution is stable at -20 °C for 3 months, at 2-8 °C for up to 1 week. Avoid repeated freeze/thaw cycles.

## Product Information

Source	Purification
HEK293 cells	> 95% by SDS-PAGE.

### Endotoxin

< 1 EU/μg of the protein by LAL method.

### Formulation

Lyophilized from a 0.2 μm filtered solution of 20mM PB, 150mM NaCl, pH 7.4. Contact us for customized product form or formulation.

### Reconstitution

Centrifuge the tube before opening. Reconstitute to a concentration of 0.1-0.5 mg/mL in sterile distilled water. Avoid vortex or vigorously pipetting the protein. For long term storage, it is recommended to add a carrier protein or stabilizer (e.g. 0.1% BSA, 5% HSA, 10% FBS or 5% Trehalose), and aliquot the reconstituted protein solution to minimize freeze-thaw cycles.

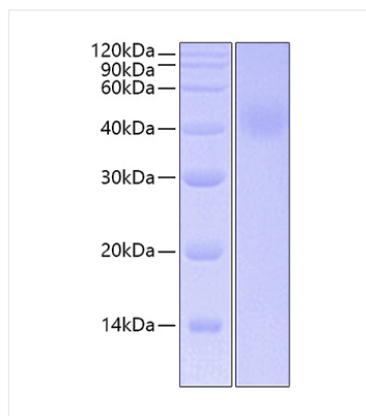
## Contact



[www.abclonal.com](http://www.abclonal.com)

## Validation Data

---



Recombinant Human IL-20RA Protein was determined by SDS-PAGE under reducing conditions with Coomassie Blue.