

RP00190

Leader in Biomolecular Solutions for Life Science



# Recombinant Human WIF-1(Q166K) Protein

Catalog No.: RP00190

Recombinant

## Sequence Information

Species	Gene ID	Swiss Prot
Human	11197	Q9Y5W5

### Tags

C-His

### Synonyms

WIF-1;WIF1

## Background

WIF (Wnt Inhibitory Factor) is a secreted protein that binds to Wnt proteins and inhibits their activity. WIF is extracellular signaling molecules that play a role in embryonic development. This protein contains a WNT inhibitory factor (WIF) domain and five epidermal growth factor (EGF)-like domains, and is thought to be involved in mesoderm segmentation.. WIF-1 is implicated as an early event tumor suppressor in cancers of the prostate, breast, lung and bladder. However, WIF-1's role in carcinogenesis may not be that simple since in other cancer types, such as colon adenocarcinoma, WIF facilitates tumorigenesis.

## Basic Information

### Description

Recombinant Human WIF-1(Q166K) Protein is produced by HEK293 cells expression system. The target protein is expressed with sequence (Gly29-Trp379(Gln166Lys)) of human WIF-1 (Accession #NP\_009122.2) fused with a 6xHis tag at the C-terminus.

### Bio-Activity

### Storage

Store the lyophilized protein at -20°C to -80 °C for long term.<br>After reconstitution, the protein solution is stable at -20 °C for 3 months, at 2-8 °C for up to 1 week. Avoid repeated freeze/thaw cycles.

## Product Information

Source	Purification
HEK293 cells	> 97% by SDS-PAGE.

### Endotoxin

< 0.1 EU/μg of the protein by LAL method.

### Formulation

Lyophilized from a 0.22 μm filtered solution of 20mM HAc-NaAc,150mM NaCl,0.5% CHAPS, pH 6.0.Contact us for customized product form or formulation.

### Reconstitution

Centrifuge the vial before opening. Reconstitute to a concentration of 0.1-0.5 mg/mL in sterile distilled water. Avoid vortex or vigorously pipetting the protein. For long term storage, it is recommended to add a carrier protein or stabilizer (e.g. 0.1% BSA, 5% HSA, 10% FBS or 5% Trehalose), and aliquot the reconstituted protein solution to minimize free-thaw cycles.

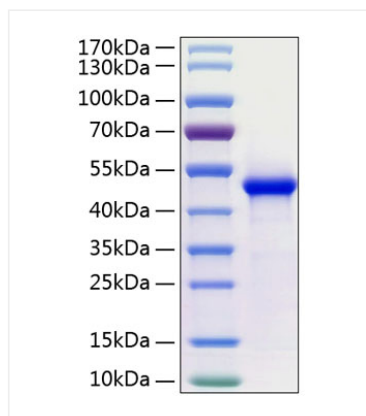
## Contact



[www.abclonal.com](http://www.abclonal.com)

## Validation Data

---



Recombinant Human WIF-1(Q166K) Protein was determined by SDS-PAGE with Coomassie Blue, showing a band at 50 kDa.