

RP00109

Leader in Biomolecular Solutions for Life Science



# Recombinant Human Clusterin/Apo-J/CLU Protein

Catalog No.: RP00109

Recombinant

## Sequence Information

Species	Gene ID	Swiss Prot
Human	1191	P10909

### Tags

C-His

### Synonyms

CLU;AAG4;APO-J;APOJ;CLI;CLU1;CLU2;KUB1;NA1/NA2;SGP-2;SGP2;SP-40;TRPM-2;TRPM2;clusterin; Clusterin alpha chain

## Product Information

Source	Purification
HEK293 cells	> 85% by SDS-PAGE.

### Endotoxin

< 0.1 EU/μg of the protein by LAL method.

### Formulation

Lyophilized from a 0.22 μm filtered solution of PBS, pH 7.4. Contact us for customized product form or formulation.

### Reconstitution

Centrifuge the vial before opening. Reconstitute to a concentration of 0.1-0.5 mg/mL in sterile distilled water. Avoid vortex or vigorously pipetting the protein. For long term storage, it is recommended to add a carrier protein or stabilizer (e.g. 0.1% BSA, 5% HSA, 10% FBS or 5% Trehalose), and aliquot the reconstituted protein solution to minimize freeze-thaw cycles.

## Contact



[www.abclonal.com](http://www.abclonal.com)

## Background

The protein encoded by this gene is a secreted chaperone that can under some stress conditions also be found in the cell cytosol. It has been suggested to be involved in several basic biological events such as cell death, tumor progression, and neurodegenerative disorders. Alternate splicing results in both coding and non-coding variants.

## Basic Information

### Description

Recombinant Human Clusterin/Apo-J/CLU Protein is produced by HEK293 expression system. The target protein is expressed with sequence (Asp23-Arg227 (βchain)&Ser228-Glu449 (αchain)) of human Clusterin/Apolipo J/Apo-J/CLU (Accession #NP\_001822) fused with a 6×His tag at the C-terminus.

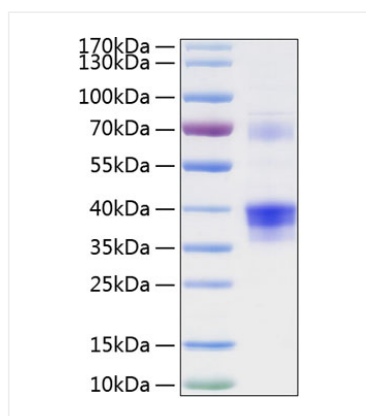
### Bio-Activity

### Storage

Store the lyophilized protein at -20°C to -80 °C for long term. After reconstitution, the protein solution is stable at -20 °C for 3 months, at 2-8 °C for up to 1 week. Avoid repeated freeze/thaw cycles.

## Validation Data

---



Recombinant Human Clusterin/Apo-J/CLU Protein was determined by SDS-PAGE with Coomassie Blue, showing bands at 39 kDa and 40 kDa.