

AS033

Leader in Biomolecular Solutions for Life Science



## HRP-conjugated Donkey anti-Mouse IgG (H+L)

Catalog No.: AS033

2 Publications

### Basic Information

#### Observed MW

25kDa(Light chain),55kDa(Heavy chain)/36kDa

#### Calculated MW

#### Category

Secondary Antibody

#### Applications

WB,IHC-P

#### Cross-Reactivity

#### Conjugate

HRP

### Background

Secondary antibodies are affinity-purified antibodies which will work with target-specific primary antibody in the detection, sorting or purification of its specified target. Secondary antibodies offer increased versatility enabling users to use many detection systems (e.g. HRP, AP, fluorescence). They can also provide greater sensitivity through signal amplification as multiple secondary antibodies. Most commonly, secondary antibodies are generated by immunizing the host animal (different from host species of primary antibody) with a pooled population of normal immunoglobulins from the host species of primary antibody and can be further purified and modified (i.e. antibody fragmentation, label conjugation, etc.) to ensure well-characterized specificity to corresponding normal immunoglobulins.

### Recommended Dilutions

WB 1:10000 - 1:30000

IHC-P 1:500 - 1:1000

### Immunogen Information

#### Gene ID

#### Swiss Prot

#### Immunogen

Mouse IgG

#### Synonyms

### Contact



[www.abclonal.com](http://www.abclonal.com)

### Product Information

#### Source

Donkey

#### Isotype

Horseradish peroxidase conjugated IgG

#### Purification

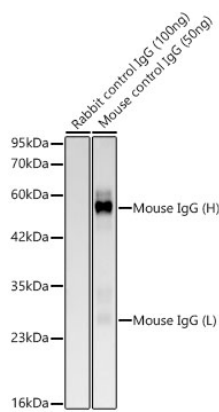
Affinity purification

#### Storage

Store at -20°C. Avoid freeze / thaw cycles.

Buffer: PBS with 0.75% BSA,50% glycerol,pH7.3.

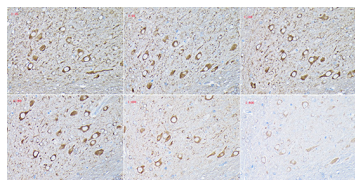
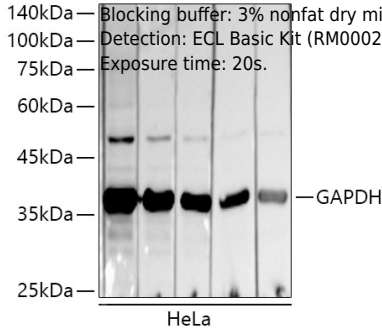
Validation Data



Western blot analysis of recombinant Mouse control IgG Protein using HRP Donkey Anti-Mouse IgG (H+L)(AS033) at 1:10000 dilution.  
Secondary antibody:HRP Donkey Anti-Mouse IgG (H+L)(AS033) at 1:10000 dilution.  
Lysates/proteins: 100ng/50ng per lane.  
Blocking buffer: 3% nonfat dry milk in TBST.  
Detection: ECL Basic Kit (RM00020).  
Exposure time: 20s.

Western blot analysis of lysates from HeLa cells, using GAPDH antibody as the primary antibody.  
Secondary antibody:HRP Donkey Anti-Mouse IgG (H+L)(AS033) at 1:10000 dilution.  
Lysates/proteins: 25 ug per lane.

Blocking buffer: 3% nonfat dry milk in TBST.  
Detection: ECL Basic Kit (RM00020).  
Exposure time: 20s.



Immunohistochemistry analysis of HRP Donkey Anti-Mouse IgG (H+L) in paraffin-embedded Mouse brain using HRP Donkey Anti-Mouse IgG (H+L) (AS033) at dilution of 1:20 - 1:800 (40x lens).Perform high pressure antigen retrieval with 10 mM citrate buffer pH 6.0 before commencing with IHC staining protocol.