

AP0838

Leader in Biomolecular Solutions for Life Science



## Phospho-NF-kB p65/RelA-T435 Rabbit pAb

Catalog No.: AP0838

### Basic Information

**Observed MW**

58kDa

**Calculated MW**

60kDa

**Category**

Polyclonal Antibody

**Applications**

WB, ELISA

**Cross-Reactivity**

Human, Mouse

### Background

NF-kappa-B is a ubiquitous transcription factor involved in several biological processes. It is held in the cytoplasm in an inactive state by specific inhibitors. Upon degradation of the inhibitor, NF-kappa-B moves to the nucleus and activates transcription of specific genes. NF-kappa-B is composed of NFKB1 or NFKB2 bound to either REL, RELA, or RELB. The most abundant form of NF-kappa-B is NFKB1 complexed with the product of this gene, RELA. Four transcript variants encoding different isoforms have been found for this gene.

### Recommended Dilutions

WB 1:500 - 1:2000

### Immunogen Information

**Gene ID**

5970

**Swiss Prot**

Q04206

**Immunogen**

A synthetic phosphorylated peptide around T435 of human RelA (NP\_068810.3).

**Synonyms**

p65; CMCU; NFKB3; AIF3BL3; Phospho-NF-kB p65/RelA-T435

### Contact



[www.abclonal.com](http://www.abclonal.com)

### Product Information

**Source**

Rabbit

**Isotype**

IgG

**Purification**

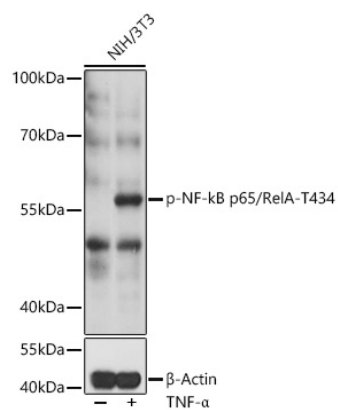
Affinity purification

**Storage**

Store at -20°C. Avoid freeze / thaw cycles.

Buffer: PBS with 0.01% thimerosal, 50% glycerol, pH 7.3.

## Validation Data



Western blot analysis of lysates from NIH/3T3 cells, using Phospho-NF-kB p65/RelA-T434 pAb (AP0838) at 1:1000 dilution or RelA antibody (A16271). NIH/3T3 cells were treated by TNF-α (20 ng/mL) at 37°C for 30 minutes.

Secondary antibody: HRP Goat Anti-Rabbit IgG (H+L) (AS014) at 1:10000 dilution.

Lysates/proteins: 25μg per lane.

Blocking buffer: 3% BSA.

Detection: ECL Basic Kit (RM00020).

Exposure time: 5min.