

AP0813

Leader in Biomolecular Solutions for Life Science



Phospho-BCAR1-Y165 Rabbit pAb

Catalog No.: AP0813

Basic Information

Observed MW

130kDa

Calculated MW

93kDa

Category

Polyclonal Antibody

Applications

WB, ELISA

Cross-Reactivity

Human, Mouse, Rat

Background

The protein encoded by this gene is a member of the Crk-associated substrate (CAS) family of scaffold proteins, characterized by the presence of multiple protein-protein interaction domains and many serine and tyrosine phosphorylation sites. The encoded protein contains a Src-homology 3 (SH3) domain, a proline-rich domain, a substrate domain which contains 15 repeat of the YxxP consensus phosphorylation motif for Src family kinases, a serine-rich domain, and a bipartite Src-binding domain, which can bind both SH2 and SH3 domains. This adaptor protein functions in multiple cellular pathways, including in cell motility, apoptosis and cell cycle control. Dysregulation of this gene can have a wide range of effects, affecting different pathways, including cardiac development, vascular smooth muscle cells, liver and kidney function, endothelial migration, and cancer.

Recommended Dilutions

WB 1:500 - 1:2000

Immunogen Information

Gene ID

9564

Swiss Prot

P56945

Immunogen

A synthetic phosphorylated peptide around Y165 of human BCAR1 (NP_055382.2).

Synonyms

CAS; CAS1; CASS1; CRKAS; P130Cas; Phospho-BCAR1-Y165

Contact



www.abclonal.com

Product Information

Source

Rabbit

Isotype

IgG

Purification

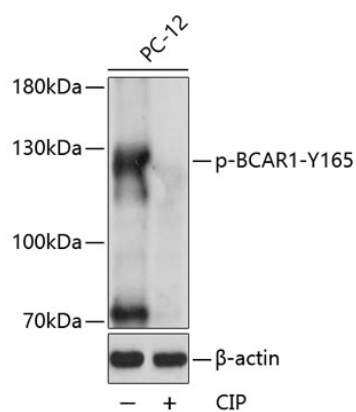
Affinity purification

Storage

Store at -20°C. Avoid freeze / thaw cycles.

Buffer: PBS with 0.01% thimerosal, 50% glycerol, pH7.3.

Validation Data



Western blot analysis of lysates from PC-12 cells, using Phospho-BCAR1-Y165 Rabbit pAb (AP0813) at 1:1000 dilution. PC-12 cell lysate were treated by CIP (20ul CIP for each 400ul cell lysate) at 37°C for 1 hour .

Secondary antibody: HRP Goat Anti-Rabbit IgG (H+L) (AS014) at 1:10000 dilution.

Lysates/proteins: 25μg per lane.

Blocking buffer: 3% BSA.

Detection: ECL Basic Kit (RM00020).

Exposure time: 90s.