

AP0803

Leader in Biomolecular Solutions for Life Science



Phospho-PAK2-S20 Rabbit pAb

Catalog No.: AP0803

Basic Information

Observed MW

61-67kDa

Calculated MW

58kDa

Category

Polyclonal Antibody

Applications

WB, ELISA

Cross-Reactivity

Human, Mouse, Rat

Background

The p21 activated kinases (PAK) are critical effectors that link Rho GTPases to cytoskeleton reorganization and nuclear signaling. The PAK proteins are a family of serine/threonine kinases that serve as targets for the small GTP binding proteins, CDC42 and RAC1, and have been implicated in a wide range of biological activities. The protein encoded by this gene is activated by proteolytic cleavage during caspase-mediated apoptosis, and may play a role in regulating the apoptotic events in the dying cell.

Recommended Dilutions

WB 1:500 - 1:2000

Immunogen Information

Gene ID

5062

Swiss Prot

Q13177

Immunogen

A synthetic phosphorylated peptide around S20 of human PAK2 (NP_002568.2).

Synonyms

KNO2; PAK65; PAKgamma; Phospho-PAK2-S20

Contact



www.abclonal.com

Product Information

Source

Rabbit

Isotype

IgG

Purification

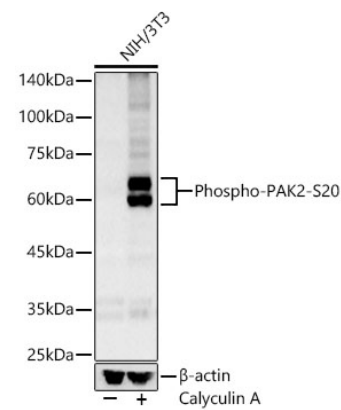
Affinity purification

Storage

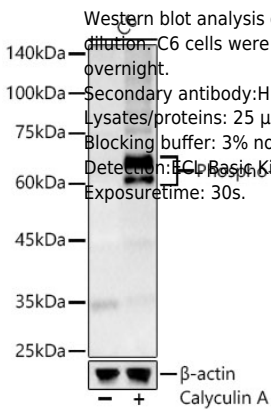
Store at -20°C. Avoid freeze / thaw cycles.

Buffer: PBS with 0.01% thimerosal, 50% glycerol, pH7.3.

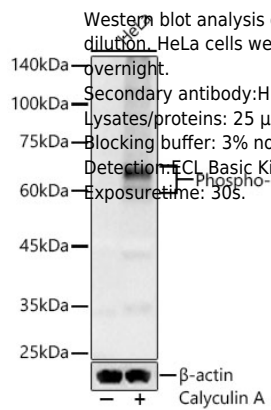
Validation Data



Western blot analysis of lysates from NIH/3T3 cells using Phospho-PAK2-S20 Rabbit pAb (AP0803) at 1:1000 dilution. NIH/3T3 cells were treated by Calyculin A (100 nM) at 37°C for 30 minutes after serum-starvation overnight.
Secondary antibody:HRP Goat Anti-Rabbit IgG (H+L)(AS014) at 1:10000 dilution.
Lysates/proteins: 25 µg per lane.
Blocking buffer: 3% nonfat dry milk in TBST.
Detection:ECL Basic Kit (RM00020).
Exposure time: 30s.



Western blot analysis of lysates from C6 cells using Phospho-PAK2-S20 Rabbit pAb (AP0803) at 1:1000 dilution. C6 cells were treated by Calyculin A (100 nM) at 37°C for 30 minutes after serum-starvation overnight.
Secondary antibody:HRP Goat Anti-Rabbit IgG (H+L)(AS014) at 1:10000 dilution.
Lysates/proteins: 25 µg per lane.
Blocking buffer: 3% nonfat dry milk in TBST.
Detection:ECL Basic Kit (RM00020).
Exposure time: 30s.



Western blot analysis of lysates from HeLa cells using Phospho-PAK2-S20 Rabbit pAb (AP0803) at 1:1000 dilution. HeLa cells were treated by Calyculin A (100 nM) at 37°C for 30 minutes after serum-starvation overnight.
Secondary antibody:HRP Goat Anti-Rabbit IgG (H+L)(AS014) at 1:10000 dilution.
Lysates/proteins: 25 µg per lane.
Blocking buffer: 3% nonfat dry milk in TBST.
Detection:ECL Basic Kit (RM00020).
Exposure time: 30s.