

AP0692

Leader in Biomolecular Solutions for Life Science



## Phospho-eIF2 $\alpha$ -S51 Rabbit mAb

Catalog No.: AP0692

Recombinant

32 Publications

### Basic Information

#### Observed MW

36kDa

#### Calculated MW

36kDa

#### Category

Polyclonal Antibody

#### Applications

WB, ELISA

#### Cross-Reactivity

Human, Mouse, Rat

#### CloneNo number

ARC0130

### Background

The translation initiation factor EIF2 catalyzes the first regulated step of protein synthesis initiation, promoting the binding of the initiator tRNA to 40S ribosomal subunits. Binding occurs as a ternary complex of methionyl-tRNA, EIF2, and GTP. EIF2 is composed of 3 nonidentical subunits, the 36-kD EIF2-alpha subunit (EIF2S1), the 38-kD EIF2-beta subunit (EIF2S2; MIM 603908), and the 52-kD EIF2-gamma subunit (EIF2S3; MIM 300161). The rate of formation of the ternary complex is modulated by the phosphorylation state of EIF2-alpha (Ernst et al., 1987 [PubMed 2948954]).

### Recommended Dilutions

WB 1:500 - 1:2000

### Immunogen Information

#### Gene ID

1965

#### Swiss Prot

P05198

#### Immunogen

A synthetic phosphorylated peptide around S51 of human EIF2S1 (NP\_004085.1).

#### Synonyms

EIF2; EIF-2; EIF2A; EIF-2A; EIF-2alpha; Phospho-eIF2 $\alpha$ -S51

### Contact



[www.abclonal.com](http://www.abclonal.com)

### Product Information

#### Source

Rabbit

#### Isotype

IgG

#### Purification

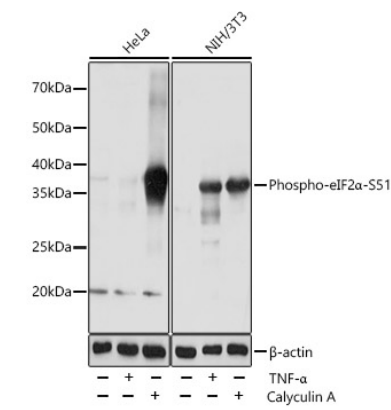
Affinity purification

#### Storage

Store at -20°C. Avoid freeze / thaw cycles.

Buffer: PBS with 0.02% sodium azide, 0.05% BSA, 50% glycerol, pH 7.3.

Validation Data



Western blot analysis of various lysates using Phospho-eIF2α-S51 Rabbit mAb (AP0692) at 1:1000 dilution. HeLa and NIH/3T3 cells were treated by Calyculin A (100 nM) at 37°C for 30 minutes after serum-starvation overnight or treated by TNF-α (20 ng/mL) at 37°C for 30 minutes. Secondary antibody: HRP Goat Anti-Rabbit IgG (H+L) (AS014) at 1:10000 dilution. Lysates/proteins: 25µg per lane. Blocking buffer: 3% nonfat dry milk in TBST. Detection: ECL Basic Kit (RM00020). Exposure time: 1s.