

AP0614

Leader in Biomolecular Solutions for Life Science



Phospho-I κ B α -S32/36 Rabbit pAb

Catalog No.: AP0614

29 Publications

Basic Information

Observed MW

40kDa

Calculated MW

36kDa

Category

Antibody

Applications

WB, ELISA

Cross-Reactivity

Human

Background

This gene encodes a member of the NF-kappa-B inhibitor family, which contain multiple ankrin repeat domains. The encoded protein interacts with REL dimers to inhibit NF-kappa-B/REL complexes which are involved in inflammatory responses. The encoded protein moves between the cytoplasm and the nucleus via a nuclear localization signal and CRM1-mediated nuclear export. Mutations in this gene have been found in ectodermal dysplasia anhidrotic with T-cell immunodeficiency autosomal dominant disease.

Recommended Dilutions

WB 1:100 - 1:500

Immunogen Information

Gene ID

4792

Swiss Prot

P25963

Immunogen

A synthetic phosphorylated peptide around S32 & S36 of human I κ B α (NP_065390.1).

Synonyms

IKBA; MAD-3; NFKBI; EDAID2; Phospho-I κ B α -S32/36

Contact



www.abclonal.com

Product Information

Source

Rabbit

Isotype

IgG

Purification

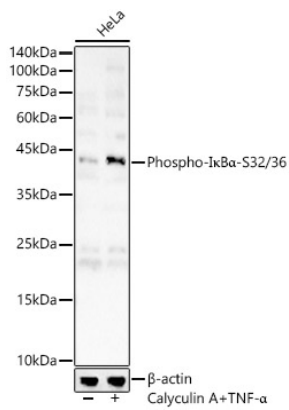
Affinity purification

Storage

Store at -20°C. Avoid freeze / thaw cycles.

Buffer: PBS with 0.02% sodium azide, 50% glycerol, pH 7.3.

Validation Data



Western blot analysis of lysates from HeLa cells, using Phospho-IκBα-S32/36 Rabbit pAb (AP0614) at 1:500 dilution. HeLa cells were treated by TNF-α (20 ng/ml) and Calyculin A (100 nM) at 37°C for 30 minutes after serum-starvation overnight.
Secondary antibody: HRP Goat Anti-Rabbit IgG (H+L) (AS014) at 1:10000 dilution.
Lysates/proteins: 25 μg per lane.
Blocking buffer: 3% nonfat dry milk in TBST.
Detection: ECL Basic Kit (RM00020).
Exposure time: 60s.