

AP0123

Leader in Biomolecular Solutions for Life Science



Phospho-NF-kB p65/RelA-S276 Rabbit pAb

Catalog No.: AP0123

98 Publications

Basic Information

Observed MW

65kDa

Calculated MW

60kDa

Category

Polyclonal Antibody

Applications

WB, IHC-P, IF/ICC, ELISA

Cross-Reactivity

Human, Mouse, Rat

Background

NF-kappa-B is a ubiquitous transcription factor involved in several biological processes. It is held in the cytoplasm in an inactive state by specific inhibitors. Upon degradation of the inhibitor, NF-kappa-B moves to the nucleus and activates transcription of specific genes. NF-kappa-B is composed of NFKB1 or NFKB2 bound to either REL, RELA, or RELB. The most abundant form of NF-kappa-B is NFKB1 complexed with the product of this gene, RELA. Four transcript variants encoding different isoforms have been found for this gene.

Recommended Dilutions

WB	1:100 - 1:500
IHC-P	1:100 - 1:500
IF/ICC	1:50 - 1:200

Immunogen Information

Gene ID

5970

Swiss Prot

Q04206

Immunogen

A synthetic phosphorylated peptide around S276 of human RelA (NP_068810.3).

Synonyms

p65; CMCU; NFKB3; AIF3BL3; Phospho-NF-kB p65/RelA-S276

Contact



www.abclonal.com

Product Information

Source

Rabbit

Isotype

IgG

Purification

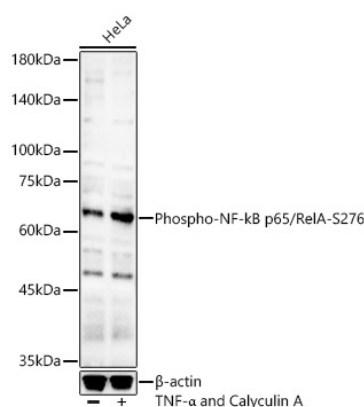
Affinity purification

Storage

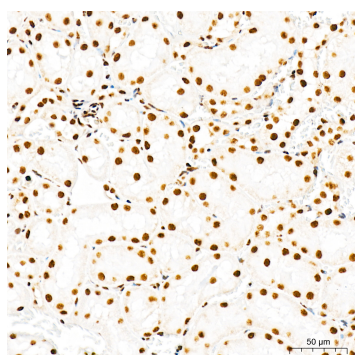
Store at -20°C. Avoid freeze / thaw cycles.

Buffer: PBS with 0.05% proclin300, 50% glycerol, pH7.3.

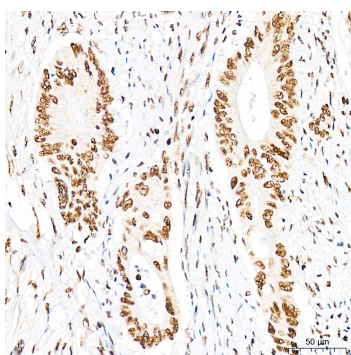
Validation Data



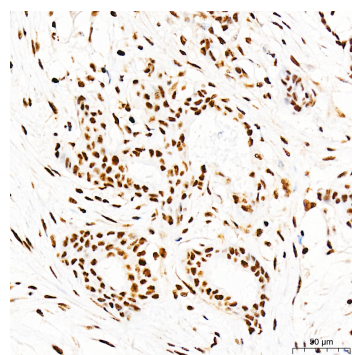
Western blot analysis of lysates from HeLa cells, using Phospho-NF-kB p65/RelA-S276 Rabbit pAb (AP0123) at 1:400 dilution. HeLa cells were treated by TNF- α (20 ng/ml) and Calyculin A (100 nM) at 37°C for 30 minutes after serum-starvation overnight.
Secondary antibody: HRP Goat Anti-Rabbit IgG (H+L) (AS014) at 1:10000 dilution.
Lysates/proteins: 25 μ g per lane.
Blocking buffer: 3% nonfat dry milk in TBST.
Detection: ECL Basic Kit (RM00020).
Exposure time: 180s.



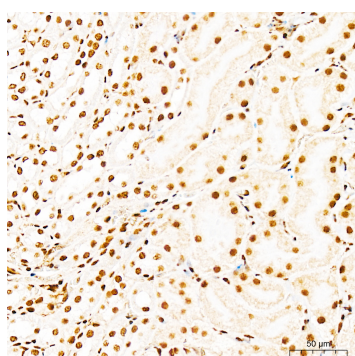
Immunohistochemistry analysis of Phospho-NF-kB p65/RelA-S276 in paraffin-embedded Rat kidney tissue using Phospho-NF-kB p65/RelA-S276 Rabbit pAb (AP0123) at a dilution of 1:1600 (40x lens). High pressure antigen retrieval performed with 0.01M Citrate Buffer(pH 6.0) prior to IHC staining.



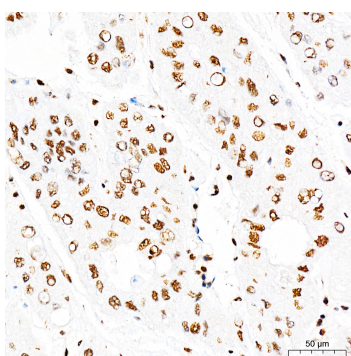
Immunohistochemistry analysis of Phospho-NF-kB p65/RelA-S276 in paraffin-embedded Human colon carcinoma tissue using Phospho-NF-kB p65/RelA-S276 Rabbit pAb (AP0123) at a dilution of 1:1600 (40x lens). High pressure antigen retrieval performed with 0.01M Citrate Buffer(pH 6.0) prior to IHC staining.



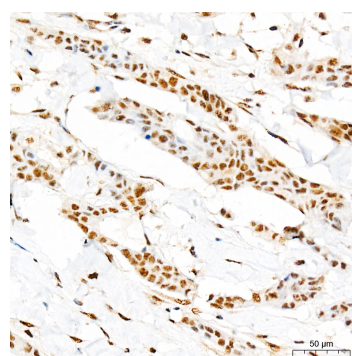
Immunohistochemistry analysis of Phospho-NF-kB p65/RelA-S276 in paraffin-embedded Human breast cancer tissue using Phospho-NF-kB p65/RelA-S276 Rabbit pAb (AP0123) at a dilution of 1:1600 (40x lens). High pressure antigen retrieval performed with 0.01M Citrate Buffer(pH 6.0) prior to IHC staining.



Immunohistochemistry analysis of Phospho-NF-kB p65/RelA-S276 in paraffin-embedded Mouse kidney tissue using Phospho-NF-kB p65/RelA-S276 Rabbit pAb (AP0123) at a dilution of 1:1600 (40x lens). High pressure antigen retrieval performed with 0.01M Citrate Buffer(pH 6.0) prior to IHC staining.

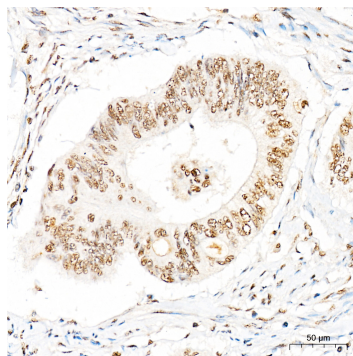


Immunohistochemistry analysis of Phospho-NF-kB p65/RelA-S276 in paraffin-embedded Human liver cancer tissue using Phospho-NF-kB p65/RelA-S276 Rabbit pAb (AP0123) at a dilution of 1:1600 (40x lens). High pressure antigen retrieval performed with 0.01M Citrate Buffer(pH 6.0) prior to IHC staining.

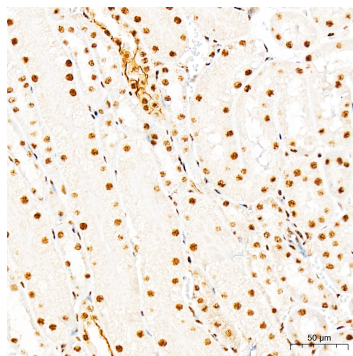


Immunohistochemistry analysis of Phospho-NF-kB p65/RelA-S276 in paraffin-embedded Human breast cancer tissue using Phospho-NF-kB p65/RelA-S276 Rabbit pAb (AP0123) at a dilution of 1:500 (40x lens). High pressure antigen retrieval performed with 0.01M Citrate Buffer(pH 6.0) prior to IHC staining.

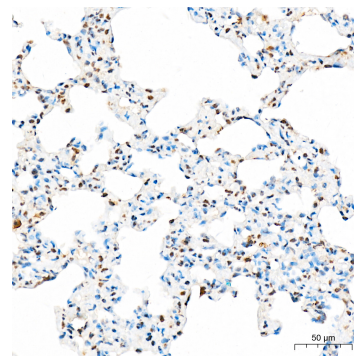
Validation Data



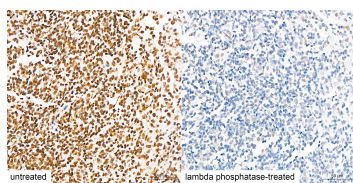
Immunohistochemistry analysis of Phospho-NF-kB p65/RelA-S276 in paraffin-embedded Human colon carcinoma tissue using Phospho-NF-kB p65/RelA-S276 Rabbit pAb (AP0123) at a dilution of 1:500 (40x lens). High pressure antigen retrieval performed with 0.01M Citrate Buffer(pH 6.0) prior to IHC staining.



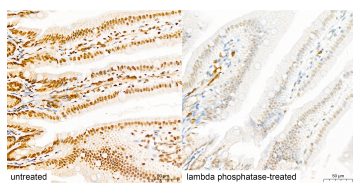
Immunohistochemistry analysis of Phospho-NF-kB p65/RelA-S276 in paraffin-embedded Mouse kidney tissue using Phospho-NF-kB p65/RelA-S276 Rabbit pAb (AP0123) at a dilution of 1:500 (40x lens). High pressure antigen retrieval performed with 0.01M Citrate Buffer(pH 6.0) prior to IHC staining.



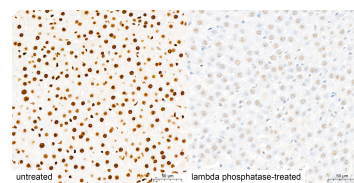
Immunohistochemistry analysis of Phospho-NF-kB p65/RelA-S276 in paraffin-embedded Rat lung tissue using Phospho-NF-kB p65/RelA-S276 Rabbit pAb (AP0123) at a dilution of 1:500 (40x lens). High pressure antigen retrieval performed with 0.01M Citrate Buffer(pH 6.0) prior to IHC staining.



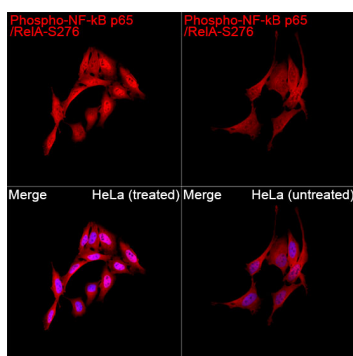
Immunohistochemistry analysis of paraffin-embedded Human tonsil tissue, untreated (left) and lambda phosphatase-treated (right), using Phospho-NF-kB p65/RelA-S276 Rabbit pAb (AP0123) at a dilution of 1:1600 (40x lens). High pressure antigen retrieval performed with 0.01M Citrate Buffer(pH 6.0) prior to IHC staining.



Immunohistochemistry analysis of paraffin-embedded Mouse intestin tissue, untreated (left) and lambda phosphatase-treated (right), using Phospho-NF-kB p65/RelA-S276 Rabbit pAb (AP0123) at a dilution of 1:1600 (40x lens). High pressure antigen retrieval performed with 0.01M Citrate Buffer(pH 6.0) prior to IHC staining.



Immunohistochemistry analysis of paraffin-embedded Rat liver tissue, untreated (left) and lambda phosphatase-treated (right), using Phospho-NF-kB p65/RelA-S276 Rabbit pAb (AP0123) at a dilution of 1:1600 (40x lens). High pressure antigen retrieval performed with 0.01M Citrate Buffer(pH 6.0) prior to IHC staining.



Immunofluorescence analysis of HeLa cells (treated with CA) and HeLa cells (untreated) using Phospho-NF-kB p65/RelA-S276 Rabbit pAb (AP0123) at a dilution of 1:100 (40x lens). Secondary antibody: Cy3-conjugated Goat anti-Rabbit IgG (H+L)(AS007) at 1:500 dilution. Blue: DAPI for nuclear staining.