

AP0019

Leader in Biomolecular Solutions for Life Science



## Phospho-CREB1-S133 Rabbit pAb

Catalog No.: AP0019

25 Publications

### Basic Information

#### Observed MW

43kDa

#### Calculated MW

35kDa

#### Category

Polyclonal Antibody

#### Applications

WB, IHC-P, IF/ICC, ELISA

#### Cross-Reactivity

Human, Mouse, Rat

### Background

This gene encodes a transcription factor that is a member of the leucine zipper family of DNA binding proteins. This protein binds as a homodimer to the cAMP-responsive element, an octameric palindrome. The protein is phosphorylated by several protein kinases, and induces transcription of genes in response to hormonal stimulation of the cAMP pathway. Alternate splicing of this gene results in several transcript variants encoding different isoforms.

### Recommended Dilutions

WB	1:200 - 1:2000
IHC-P	1:50 - 1:200
IF/ICC	1:50 - 1:100

### Immunogen Information

#### Gene ID

1385

#### Swiss Prot

P16220

#### Immunogen

A synthetic phosphorylated peptide around S133 of human CREB1 (NP\_604391.1).

#### Synonyms

CREB; CREB-1; Phospho-CREB1-S133

### Contact



[www.abclonal.com](http://www.abclonal.com)

### Product Information

#### Source

Rabbit

#### Isotype

IgG

#### Purification

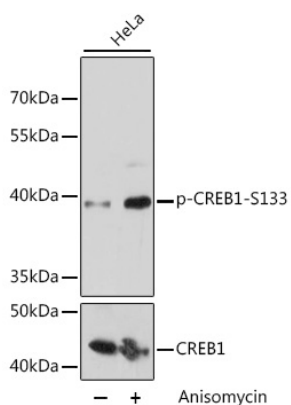
Affinity purification

#### Storage

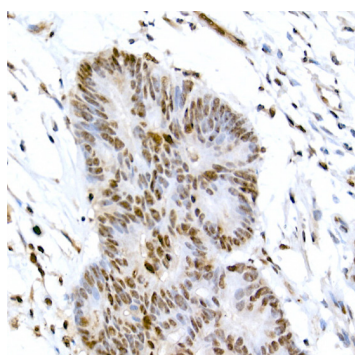
Store at -20°C. Avoid freeze / thaw cycles.

Buffer: PBS with 0.02% sodium azide, 50% glycerol, pH7.3.

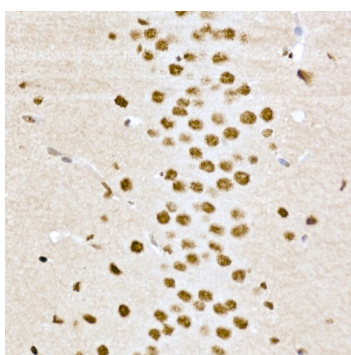
## Validation Data



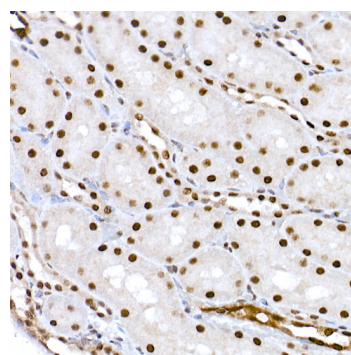
Western blot analysis of extracts of HeLa cells, using Phospho-CREB1-S133 pAb (AP0019) at 1:2000 dilution or CREB1 antibody (A11064). HeLa cells were treated by Anisomycin (25  $\mu$ g/mL) at 37°C for 30 minutes after serum-starvation overnight.  
Secondary antibody: HRP Goat Anti-Rabbit IgG (H+L) (AS014) at 1:10000 dilution.  
Lysates/proteins: 25  $\mu$ g per lane.  
Blocking buffer: 3% BSA.  
Detection: ECL Basic Kit (RM00020).  
Exposure time: 30s.



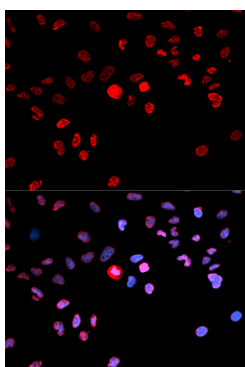
Immunohistochemistry analysis of paraffin-embedded human colon carcinoma using Phospho-CREB1-S133 Rabbit pAb (AP0019) at dilution of 1:100 (40x lens). Perform high pressure antigen retrieval with 10 mM citrate buffer pH 6.0 before commencing with IHC staining protocol.



Immunohistochemistry analysis of paraffin-embedded mouse brain using Phospho-CREB1-S133 Rabbit pAb (AP0019) at dilution of 1:100 (40x lens). Perform high pressure antigen retrieval with 10 mM citrate buffer pH 6.0 before commencing with IHC staining protocol.



Immunohistochemistry analysis of paraffin-embedded rat kidney using Phospho-CREB1-S133 Rabbit pAb (AP0019) at dilution of 1:100 (40x lens). Perform high pressure antigen retrieval with 10 mM citrate buffer pH 6.0 before commencing with IHC staining protocol.



Immunofluorescence analysis of MCF-7 cells using Phospho-CREB1-S133 antibody (AP0019). Blue: DAPI for nuclear staining.